



BCIS Home | Log In | User Registration | Hot Topics | Submit Surcharge | Stats & Facts | Publications | Contact Us | BCIS Site Map | Links | Search



Product Approval
USER: Public User

[Product Approval Menu](#) > [Product or Application Search](#) > [Application List](#) > [Application Detail](#)



FL #	FL13757-R6														
Application Type	Revision														
Code Version	2017														
Application Status	Approved														
Comments															
Archived	<input type="checkbox"/>														
Product Manufacturer Address/Phone/Email	Town and Country Industries, 400 West McNab Road Ft. Lauderdale, FL 33309 (954) 493-8551 tomj@tc-alum.com														
Authorized Signature	Frank Bennardo frank@engineeringexpress.com														
Technical Representative Address/Phone/Email	Thomas B. Johnston 400 west McNab Rd. Ft. Lauderdale, FL 33309 (954) 970-9999 tomj@tc-alum.com														
Quality Assurance Representative Address/Phone/Email															
Category	Shutters														
Subcategory	Accordion														
Compliance Method	Evaluation Report from a Florida Registered Architect or a Licensed Florida Professional Engineer <input type="checkbox"/> Evaluation Report - Hardcopy Received														
Florida Engineer or Architect Name who developed the Evaluation Report	Frank L. Bennardo, P.E.														
Florida License	PE-0046549														
Quality Assurance Entity	National Accreditation and Management Institute														
Quality Assurance Contract Expiration Date	12/31/2020														
Validated By	ORLANDO L. BLANCO, P.E. <input checked="" type="checkbox"/> Validation Checklist - Hardcopy Received														
Certificate of Independence	FL13757 R6 COI Indep1.pdf FL13757 R6 COI Indep2.pdf FL13757 R6 COI Indep3.pdf														
Referenced Standard and Year (of Standard)	<table border="0"> <thead> <tr> <th><u>Standard</u></th> <th><u>Year</u></th> </tr> </thead> <tbody> <tr> <td>ASTM E1886</td> <td>2006</td> </tr> <tr> <td>ASTM E1996</td> <td>2005</td> </tr> <tr> <td>ASTM E330</td> <td>2002</td> </tr> <tr> <td>TAS 201</td> <td>1994</td> </tr> <tr> <td>TAS 202</td> <td>1994</td> </tr> <tr> <td>TAS 203</td> <td>1994</td> </tr> </tbody> </table>	<u>Standard</u>	<u>Year</u>	ASTM E1886	2006	ASTM E1996	2005	ASTM E330	2002	TAS 201	1994	TAS 202	1994	TAS 203	1994
<u>Standard</u>	<u>Year</u>														
ASTM E1886	2006														
ASTM E1996	2005														
ASTM E330	2002														
TAS 201	1994														
TAS 202	1994														
TAS 203	1994														
Equivalence of Product Standards Certified By	Florida Licensed Professional Engineer or Architect														

6.8 STREAMLINE SHUTTER

FOR USE WITHIN AND OUTSIDE THE HVHZ

GENERAL NOTES:

1. THIS SYSTEM HAS BEEN TESTED AND EVALUATED IN ACCORDANCE WITH THE FLORIDA BUILDING CODE SIXTH EDITION (2017), FOR USE WITHIN AND OUTSIDE THE HIGH VELOCITY HURRICANE ZONE, AND THE INTERNATIONAL BUILDING CODE (IBC) AND INTERNATIONAL RESIDENTIAL CODE (IRC). THIS SYSTEM MEETS MISSILE LEVEL "D" AND INCLUDES ESSENTIAL FACILITIES AS DEFINED IN ASCE 109-09. SEE PRODUCT EVALUATION REPORT FOR MORE INFORMATION.
2. DESIGNER TO PROVIDE DESIGN PRESSURES FOR USE WITH THIS SYSTEM. DESIGNER SHALL BE RESPONSIBLE FOR OBTAINING THE CORRECT DESIGN PRESSURES FOR THE PROJECT. DESIGNER SHALL BE RESPONSIBLE FOR OBTAINING THE CORRECT DESIGN PRESSURES FOR THE PROJECT. DESIGNER SHALL BE RESPONSIBLE FOR OBTAINING THE CORRECT DESIGN PRESSURES FOR THE PROJECT.
3. TESTING WAS CONDUCTED IN ACCORDANCE WITH TAS 201702/203 AND ASTM E1886/E1996/E2330. DESIGN PRESSURES NOTED HEREIN ARE BASED ON MAXIMUM TESTED PRESSURES DIVIDED BY A 1.5 SAFETY FACTOR.
4. THIS SYSTEM HAS BEEN DESIGNED WITH NO SEPARATION FROM GLAZING REQUIRED FOR ALL WIND ZONES. IN ACCORDANCE WITH ASTM 1996-09, IT IS ACCEPTABLE BY CODE UNLESS OPTIONAL CRITERIA IS INDEPENDENTLY ADOPTED BY THE AUTHORITY HAVING JURISDICTION.
5. NO INCREASE IN ALLOWABLE STRESS HAS BEEN USED IN THE DESIGN OF THESE PRODUCTS. WIND LOAD DURATION FACTOR $C_d = 1.5$ WAS USED FOR WOOD ANCHOR DESIGN.
6. DETERMINE THE POSITIVE AND NEGATIVE DESIGN LOADS TO USE WHEN REFERENCING THESE PRODUCTS IN ACCORDANCE WITH THE GOVERNING CODE AND GOVERNING WIND VELOCITY. FOR WIND SPEEDS IN ACCORDANCE WITH ASCE 7, A DIRECTIONALITY FACTOR OF $K_d = 0.85$ SHALL BE USED.
7. THE SYSTEM DETAILED HEREIN IS GENERIC AND DOES NOT PROVIDE INFORMATION FOR A SPECIFIC SITE.
8. THESE INSTALLATION INSTRUCTIONS ARE PART OF A PRODUCT APPROVAL EVALUATION AND SHALL ONLY BE USED IN CONJUNCTION WITH THE EVALUATION REPORT SUBMITTED FOR THE SAME PRODUCT APPROVAL. USE OF THESE APPROVAL DOCUMENTS SHALL COMPLY WITH CHAPTER 616.15-23 OF THE FLORIDA ADMINISTRATIVE CODE.
9. THESE APPROVAL DOCUMENTS ARE SUITABLE TO BE APPLIED BY THE CONTRACTOR PROVIDED THE CONTRACTOR DOES NOT DEVIATE FROM THE CONDITIONS DETAILED HEREIN AND THE CONTRACTOR VERIFIES THAT THE EXISTING STRUCTURE DOES NOT DEVIATE IN EITHER FORM OR MATERIAL FROM THE STRUCTURAL SUBSTRATES DETAILED HEREIN.
10. ANY MODIFICATIONS OR ADDITIONS TO THESE APPROVAL DOCUMENTS WILL VOID THE APPROVAL.
11. WHEN THE SITE CONDITIONS DEVIATE FROM THESE APPROVAL DOCUMENTS, THE BUILDING OFFICIAL MAY REQUIRE THAT SPECIFIC DOCUMENTS BE PREPARED, SIGNED, DATED AND SEALED BY A LICENSED ENGINEER OR REGISTERED ARCHITECT WHICH DETAIL AND JUSTIFY THE DEVIATION, AS A CONDITION TO THE BUILDING OFFICIAL GRANTING HIS/HER APPROVAL.
12. EACH SHUTTER ASSEMBLY SHALL BE PERMANENTLY LABELED WITH THE FOLLOWING MINIMUM INFORMATION:
 - TOWN & COUNTRY INDUSTRIES
 - PORT LAUDERDALE, FL
 - MISSILE LEVEL D - ASTM E1886, E1996 & E2330
 - TAS 201702 & 203
 - FLORIDA PRODUCT APPROVAL NUMBER
13. ALL EXTRUSIONS SHOWN SHALL BE 6063-T6 ALUMINUM ALLOY, U.O.N., WITH A MINIMUM F_y OF 25 KSI. BOLTS AND WASHERS (EXCLUDING INSTALLATION) SHALL BE STAINLESS STEEL WITH A MINIMUM TENSILE STRENGTH OF 80 KSI, U.O.N. POP RIVETS SHALL BE 1/4" Ø OR 3/16" Ø 5052 ALUM. ALLOY.
14. ALL SHUTTERS SHALL HAVE A LOCKING MECHANISM CONSISTING OF THUMBSCREW, PUSH LOCK OR BOX LOCK AT CENTER OR SIDE CLOSURE.
15. TOP AND BOTTOM DETAILS MAY BE INTER-CHANGED AS FIELD CONDITIONS REQUIRE.
16. FLOOR TRACKS MAY BE REMOVABLE AT NON-STACKING LOCATIONS. USE REMOVABLE ANCHORS.
17. ALL DIMENSIONS SHOWN INCLUDE POWDER COATING FINISH.
18. ALL STEEL IN CONTACT WITH ALUMINUM SHALL BE PAINTED OR PLATED.
19. SHUTTER MAY BE INSTALLED WITH UP TO (2) ADDITIONAL BLADES OF SLACK.
20. SEALANT SHALL BE USED ON ANCHORS OR TRACKS WHEREVER WATER SEEPAGE IS POSSIBLE.

TABLE 1:

ACCORDION SHUTTER SPAN SCHEDULE				
SHUTTER SPAN	POSITIVE DESIGN PRESSURE (PSF)		NEGATIVE DESIGN PRESSURE (PSF)	
	72"	100	100	70
99"	70	70	53	53
120"	53	53	43	43
144"	43	43	40	40

- TABLE 1 NOTES:**
1. DESIGN PRESSURES SHOWN IN ACCORDION SHUTTER SPAN SCHEDULE ABOVE ARE MINIMUM ALLOWABLE DESIGN PRESSURES.
 2. LINEAR INTERPOLATION BETWEEN SHUTTER SPANS IS NOT PERMITTED. POSITIVE DESIGN PRESSURES FOR THE NEXT HIGHER SPAN SHALL BE USED.

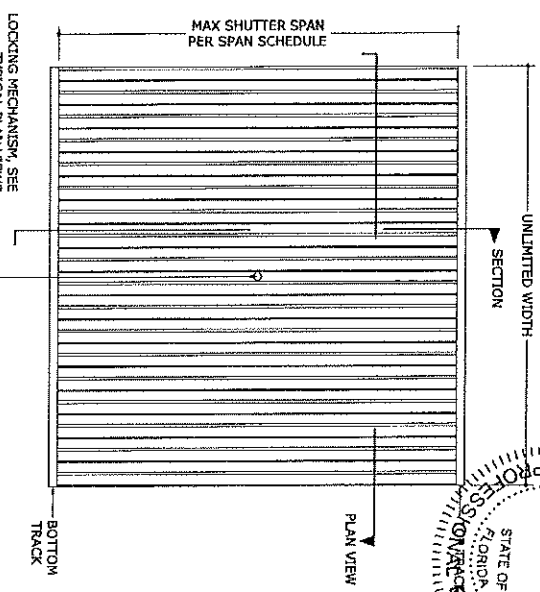


TABLE 2:

MINIMUM SEPARATION FROM GLASS					
SHUTTER SPAN	HVHZ		NON-HVHZ ESSENTIAL FACILITIES		INSTALLATIONS > 30' ABOVE GRADE
	72"	2-14"	1-5/8"	2-3/8"	
99"	3-1/2"	1-7/8"	3-5/8"	1-7/8"	1-7/8"
120"	4-1/8"	2"	4-1/4"	2"	2"
144"	4-7/8"	2"	5"	2"	2"

- TABLE 2 NOTES:**
1. HVHZ: DEFINED AS MIAMI-DADE COUNTY AND BROWARD COUNTY FLORIDA.
 2. NON-HVHZ: DEFINED AS ALL LOCATIONS OTHER THAN MIAMI-DADE COUNTY AND BROWARD COUNTY FLORIDA.
 3. NO SEPARATION FROM GLASS IS REQUIRED FOR INSTALLATIONS IN WIND ZONES AT OR OUTSIDE OF THE HVHZ, PROVIDED THAT SHUTTER HAS A MINIMUM SEPARATION FROM GLASS WHEN $\leq 30'$ ABOVE GRADE.
 4. LINEAR INTERPOLATION BETWEEN SHUTTER SPANS IS NOT PERMITTED. FOR SPANS BETWEEN THOSE INDICATED ABOVE, THE SEPARATION FROM GLASS SHALL BE USED.
 5. SEPARATION FOR GLASS OUTSIDE OF THE HVHZ HAS BEEN DETERMINED IN ACCORDANCE WITH ASTM E1996-09.

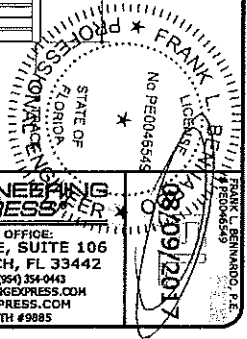
1
1
TYPICAL ACCORDION SHUTTER ELEVATION
N.T.S.
EXTERIOR ELEV

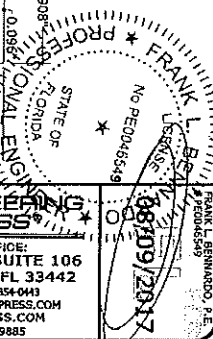
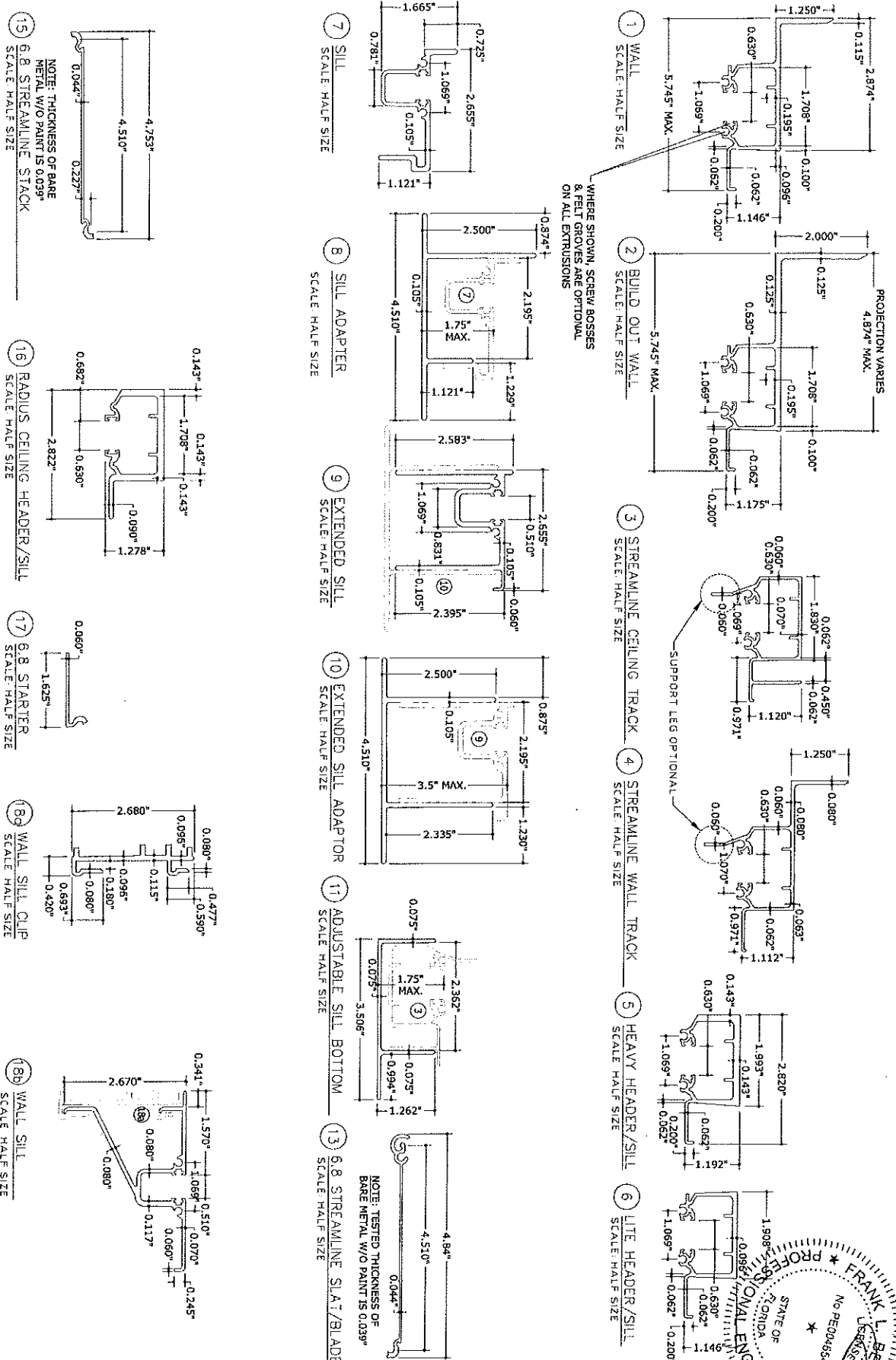
DATE	CHKD	DRWN	REMARKS
04/28/10	FLB	KL	NET ISSUE
12/16/11	FLB	CSL	2010 FBC (16TCH-0002)
10/25/13	FLB	KL	CLIENT REVISIONS
03/28/16	CSL	RWN	REV (2014 FBC)
06/04/17	FLB	RWN	REV (2017 FBC)

SCALE: 1/1
DATE: 08/09/2017

Town & Country INDUSTRIES
Wholesale Aluminum and Building Products
400 WEST MCNAB ROAD
FT. LAUDERDALE, FL 33309
FL13757.2

EXPRESS
CORPORATE OFFICE
160 SW 12th AVE, SUITE 106
DEERFIELD BEACH, FL 33442
P: (561) 354-6660 F: (561) 354-0413
E: HELLO@ENGINEERINGEXPRESS.COM
ENGINEERINGEXPRESS.COM
CERT OF AUTH #9985





ENGINEERING EXPRESS

CORPORATE OFFICE:
160 SW 12th AVE, SUITE 106
DEERFIELD BEACH, FL 33442
P: (561) 354-8888 F: (561) 354-0413
E: HELL@ENGINEERINGEXPRESS.COM
ENGINEERINGEXPRESS.COM
CERT OF AUTH #9885

Town & Country INDUSTRIES
Wholesale Aluminum and Building Products
A Division of TCC Group Co., Inc.

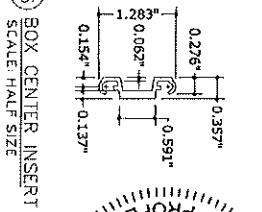
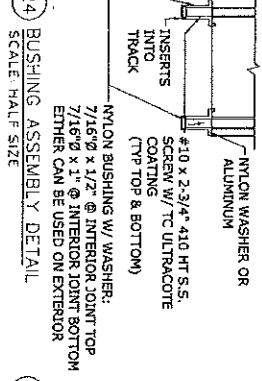
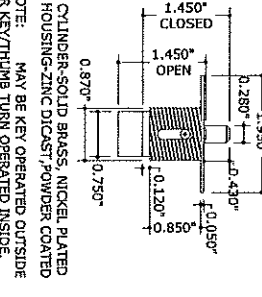
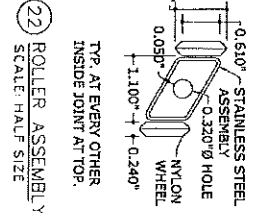
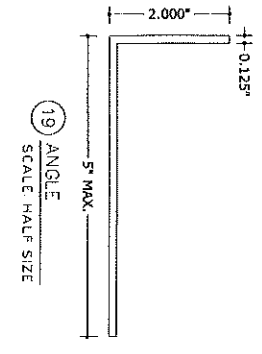
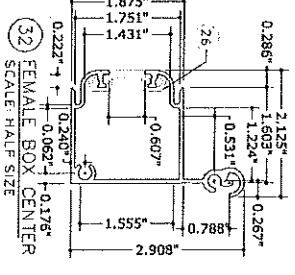
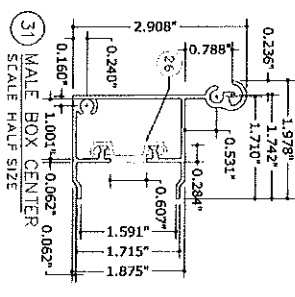
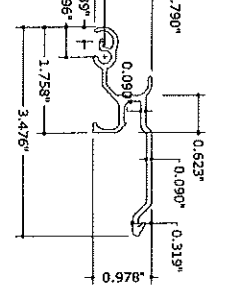
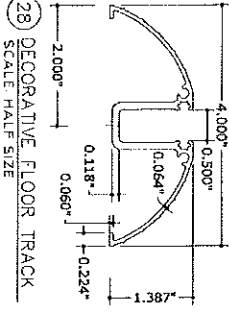
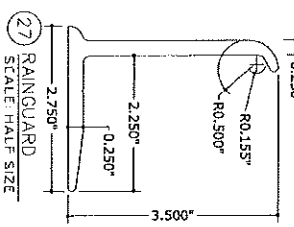
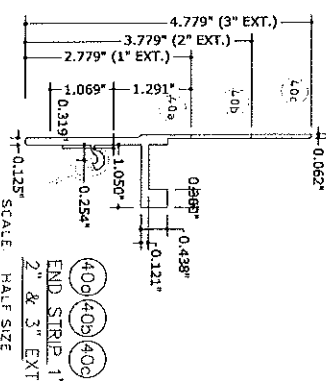
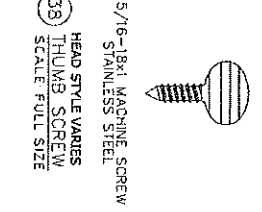
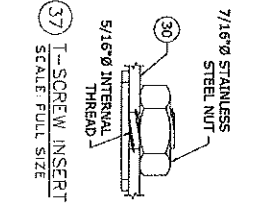
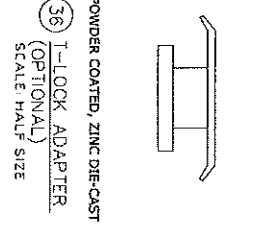
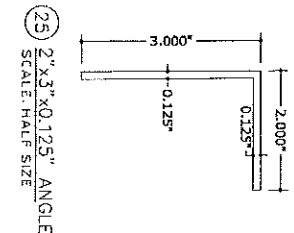
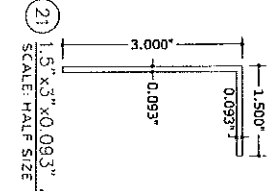
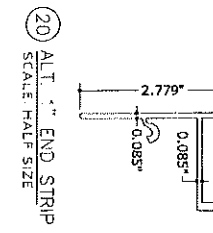
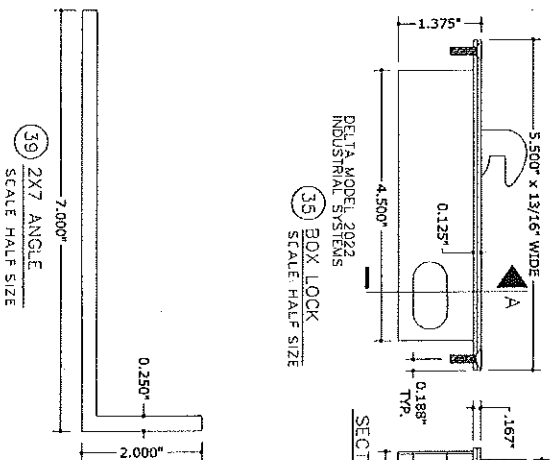
400 WEST MCNAB ROAD
FT. LAUDERDALE, FL 33309
FL13757.2

REV	DATE	BY	CHKD	DATE	DESCRIPTION
1	04/25/10	KL	FLB	04/25/10	INIT ISSUE
2	12/18/11	CSL	KL	12/18/11	2010 FBC (16-104-0002)
3	10/25/13	KL	FLB	10/25/13	CLIENT REVISIONS
4	03/24/15	RWN	CSL	03/24/15	REV (2014 FBC)
5	08/04/17	RWN	FLB	08/04/17	REV (2017 FBC)

REMARKS: THIS DOCUMENT IS THE PROPERTY OF FRANK L. BERNARDINO, P.E. AND WILL BE KEPT IN CONFIDENCE BY THE USER. IT IS TO BE USED ONLY FOR THE PROJECT AND SITE SPECIFICALLY IDENTIFIED IN THIS DOCUMENT. IT IS NOT TO BE REPRODUCED OR TRANSMITTED IN ANY FORM OR BY ANY MEANS, ELECTRONIC OR MECHANICAL, INCLUDING PHOTOCOPYING, RECORDING, OR BY ANY INFORMATION STORAGE AND RETRIEVAL SYSTEM, WITHOUT THE WRITTEN PERMISSION OF FRANK L. BERNARDINO, P.E.

SCALE: 15-2339

PAGE DESCRIPTION: 2



FRANK L. BERINAWOOD, P.E.
PROFESSIONAL ENGINEER
STATE OF FLORIDA
No. PE0046548
LICENSE
09/2017

3

11

REMARKS	DRWN	CHKD	DATE
REV 001	KL	FLB	04/28/10
2010 FBC (10-TCH-000)	CSL	KL	12/09/11
CLIENT REVISION	KL	FLB	10/26/13
REV (2014 FBC)	RWN	CSL	03/29/16
REV (2017 FBC)	RWN	FLB	08/04/17

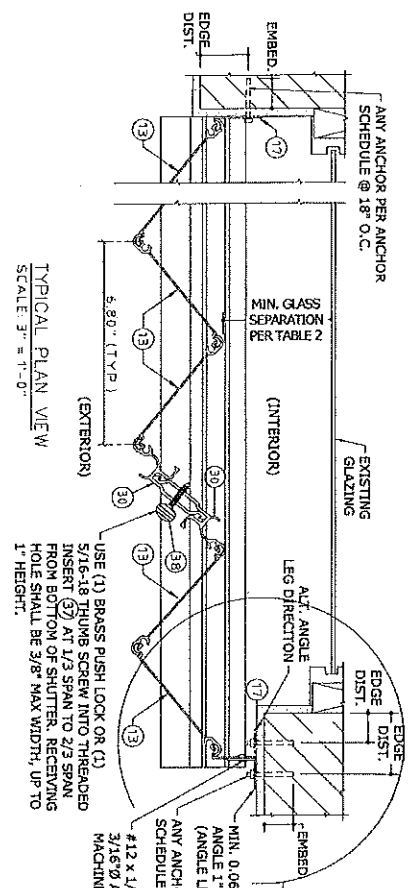
SCALE: 1/8\"/>
 DRAWING NO: 15-2339
 PART DESCRIPTION:

Town & Country INDUSTRIES
Wholesale Aluminum and Building Products

400 WEST MCNAB ROAD
FT. LAUDERDALE, FL 33309

FL13757.2

ENGINEERING EXPRESS
CORPORATE OFFICE:
160 SW 12th AVE, SUITE 106
DEERFIELD BEACH, FL 33442
TEL: (561) 855-1555 FAX: (561) 254-6868
E: HELLO@ENGINEERINGEXPRESS.COM
ENGINEERINGEXPRESS.COM
CERT OF AUTH #9885



TYPICAL PLAN VIEW
SCALE 3" = 1'-0"

USE (1) BRASS PUSH LOCK OR (1) 5/16" DIA. THUMB SCREW INTO TRACKED INSERT (2) AT 1/3 SPAN FROM BOTTOM OF SHUTTER, RECEIVING HOLE SHALL BE 3/8" MAX WIDTH, UP TO 1" HEIGHT.

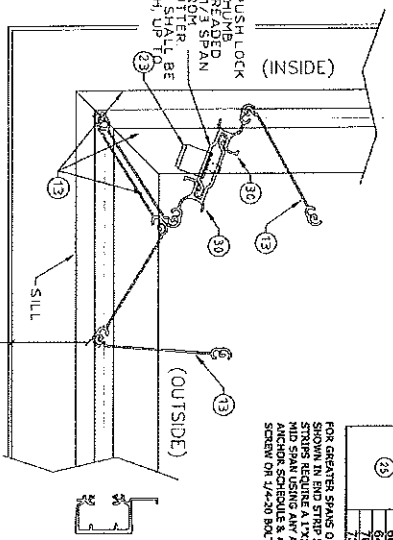
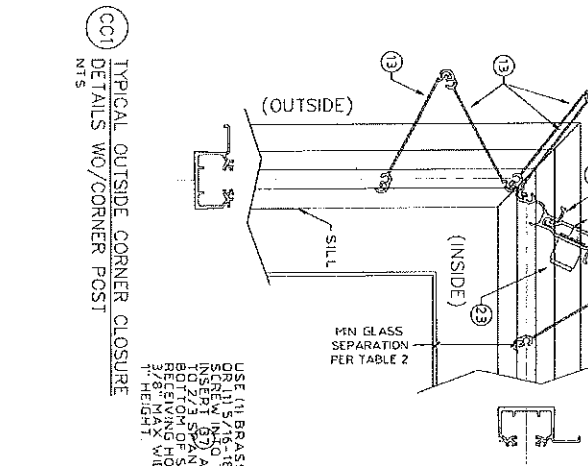
MIN. 0.062" THICK 6063-T6 ALUM. ANGLE 1" x 1" MIN. TO 2" x 5" MAX. (ANGLE LEG MAY BE REVERSED)
ANY ANCHOR PER ANCHOR SCHEDULE @ 18" O.C.
#12 x 1/2" GALVANIZED OR S.S. SHS, 3/16" DIA. TOP RIVER, OR 1/4-20 MACHINE BOLT & NUT @ 18" O.C.

LOCKING DETAILS FOR CENTER MATES SHOWN ON RANDOM DETAILS

END STRIP SCHEDULE

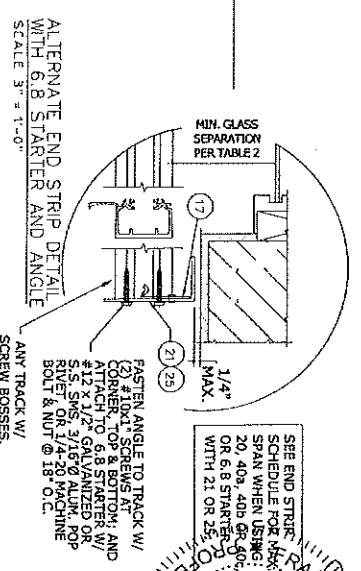
PSF	SPAN	PSF	SPAN
1" BO (2.7)	62	108	108
(4)	72	108	108
	82	84	84
	92	84	84
	102	84	84
	112	84	84
	122	84	84
	132	84	84
	142	84	84
	152	84	84
	162	84	84
	172	84	84
	182	84	84
	192	84	84
	202	84	84
	212	84	84
	222	84	84
	232	84	84
	242	84	84
	252	84	84
	262	84	84
	272	84	84
	282	84	84
	292	84	84
	302	84	84
	312	84	84
	322	84	84
	332	84	84
	342	84	84
	352	84	84
	362	84	84
	372	84	84
	382	84	84
	392	84	84
	402	84	84
	412	84	84
	422	84	84
	432	84	84
	442	84	84
	452	84	84
	462	84	84
	472	84	84
	482	84	84
	492	84	84
	502	84	84
	512	84	84
	522	84	84
	532	84	84
	542	84	84
	552	84	84
	562	84	84
	572	84	84
	582	84	84
	592	84	84
	602	84	84
	612	84	84
	622	84	84
	632	84	84
	642	84	84
	652	84	84
	662	84	84
	672	84	84
	682	84	84
	692	84	84
	702	84	84
	712	84	84
	722	84	84
	732	84	84
	742	84	84
	752	84	84
	762	84	84
	772	84	84
	782	84	84
	792	84	84
	802	84	84
	812	84	84
	822	84	84
	832	84	84
	842	84	84
	852	84	84
	862	84	84
	872	84	84
	882	84	84
	892	84	84
	902	84	84
	912	84	84
	922	84	84
	932	84	84
	942	84	84
	952	84	84
	962	84	84
	972	84	84
	982	84	84
	992	84	84
	1002	84	84

FOR CENTER SPANS OR LONG SPANS, SHOW TRACK AND STRIP SCHEDULES AND ANCHOR SCHEDULES ON THE SILL AND SPAN USING ANY ANCHOR ON THE SILL OR SPAN TO 2/3 SPAN FROM BOTTOM OF SHUTTER.

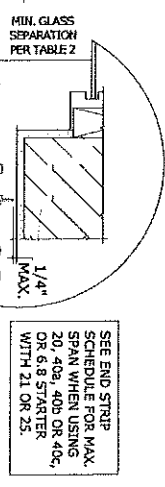


TYPICAL INSIDE CORNER CLOSURE
SCALE 3" = 1'-0"

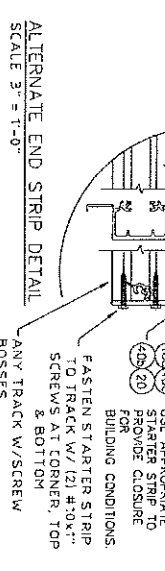
MIN. GLASS SEPARATION PER TABLE 2



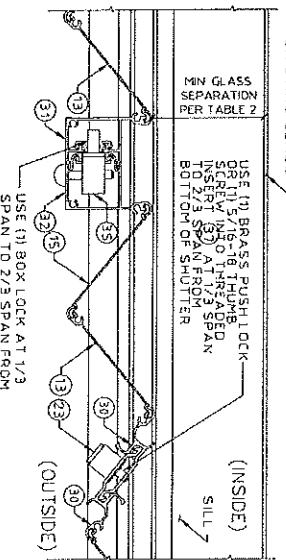
ALTERNATE END STRIP DETAIL
SCALE 3" = 1'-0"



MIN. GLASS SEPARATION PER TABLE 2
SCALE 3" = 1'-0"



ALTERNATE END STRIP DETAIL
SCALE 3" = 1'-0"



MULTIPLE SHUTTER ASSEMBLY
SCALE 3" = 1'-0"

SEE END STRIP SCHEDULE FOR MAX SPAN WHEN USING 20, 40, 40B OR 40C WITH 21 OR 25.

FASTEN ANGLE TO TRACK W/ (2) #10-11 SCREWS AT CORNER TOP & BOTTOM; AND #12 x 1/2" GALVANIZED OR S.S. SHS 3/16" DIA. TOP RIVER OR 1/4-20 MACHINE BOLT & NUT @ 18" O.C.
ANY TRACK W/ SCREW BOSSES.

SEE END STRIP SCHEDULE FOR MAX SPAN WHEN USING 20, 40, 40B OR 40C WITH 21 OR 25.

USE APPROPRIATE STARTER STRIP TO PROVIDE CLOSURE BUILDING CONDITIONS. FASTEN STARTER STRIP TO TRACK W/ (2) #10-11 SCREWS AT CORNER TOP & BOTTOM. ANY TRACK W/ SCREW BOSSES.

REVISION	DATE	BY	CHKD	DATE
1	04/28/16	KL	FLB	04/28/16
2	12/16/11	CSL	KL	12/16/11
3	10/28/13	KL	FLB	10/28/13
4	03/29/16	RWN	CSL	03/29/16
5	06/04/17	RWN	FLB	06/04/17

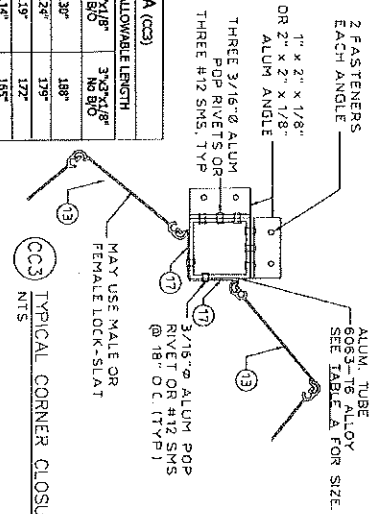
15-2339

Town & Country INDUSTRIES
Wholesale Aluminum and Building Products
A Division of ABC Supply Co., Inc.
400 WEST MCNAB ROAD
FT. LAUDERDALE, FL 33309
FL13757.2

EXPRESS ENGINEERING
CORPORATE OFFICE
160 SW 12th AVE, SUITE 106
DEERFIELD BEACH, FL 33442
TEL: (561) 888-8888
E: HELLO@ENGINEERINGEXPRESS.COM
ENGINEERINGEXPRESS.COM
CERT OF AUTH #9885

TABLE A (CC3)

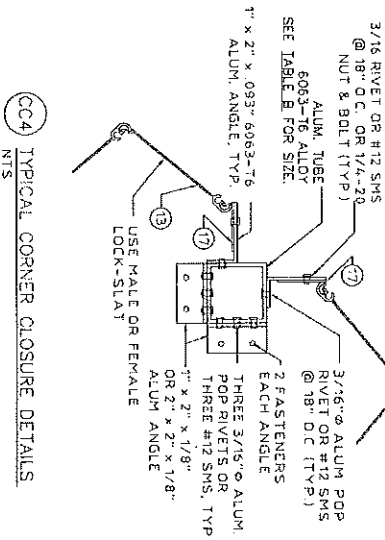
PRESSURE VS ALLOWABLE LENGTH	2"x2"x1/8" NO B/O	3"x3"x1/8" NO B/O
62	130"	188"
72	130"	195"
82	119"	172"
92	114"	165"
102	110"	160"
120	104"	147"
150	97"	131"
200	85"	114"



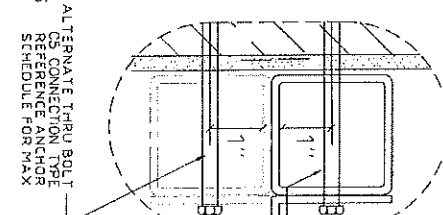
CC3 TYPICAL CORNER CLOSURE DETAILS
SCALE 3" = 1'-0"

TABLE B (CC4)

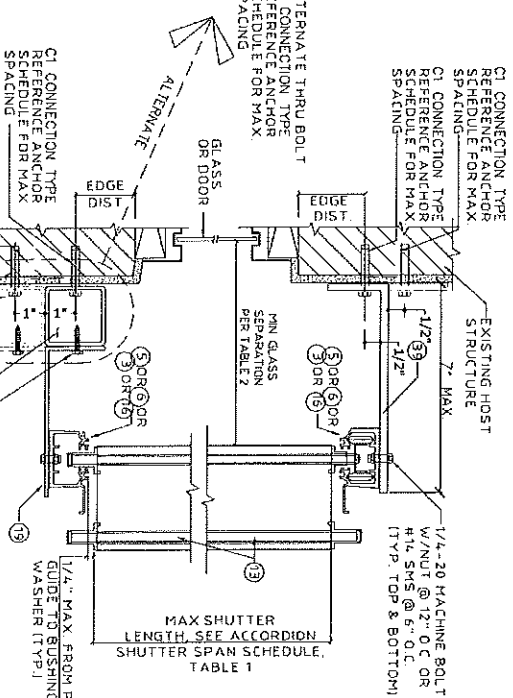
PRESSURE VS ALLOWABLE LENGTH	2"x2"x1/8" WITH B/O	3"x3"x1/8" WITH B/O
62	113"	166"
72	107"	157"
82	101"	147"
92	95"	139"
102	90"	132"
120	83"	122"
150	74"	109"
200	64"	94"



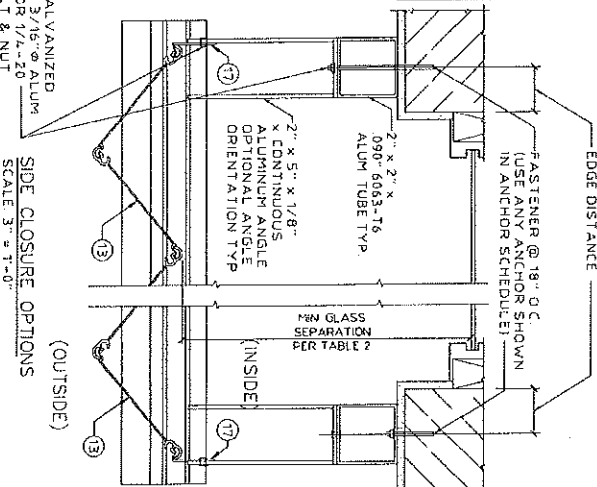
CC4 TYPICAL CORNER CLOSURE DETAILS
SCALE 3" = 1'-0"



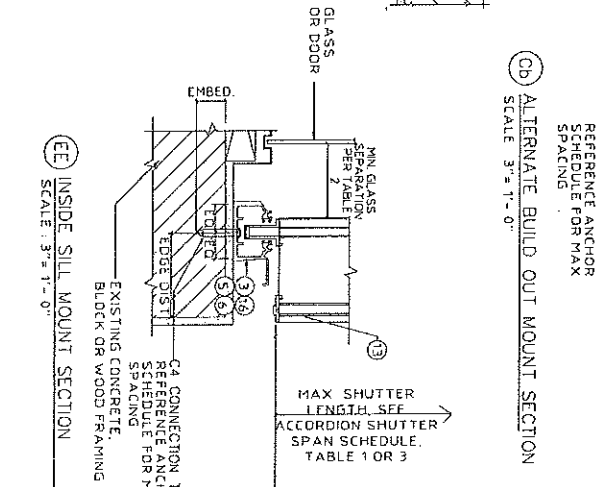
CC5 ALTERNATE THRU BOLT CONNECTION TYPE REFERENCE ANCHOR SCHEDULE FOR MAX SPACING
SCALE 3" = 1'-0"



CC6 ALTERNATE BUILD OUT MOUNT SECTION
SCALE 3" = 1'-0"



CC7 SIDE CLOSURE OPTIONS (OUTSIDE)
SCALE 3" = 1'-0"



CC8 INSIDE SILL MOUNT SECTION
SCALE 3" = 1'-0"

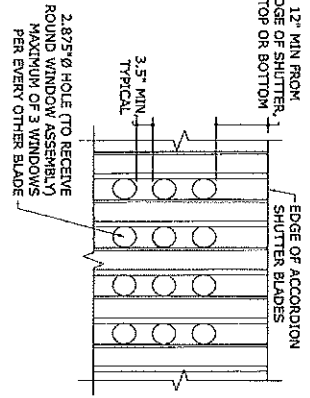
REVISIONS

NO	DATE	BY	CHKD	DESCRIPTION
1	04/28/10	KL	FLB	ISSUE
2	12/18/11	CSL	KL	2010 FBC (10-104-002)
3	10/25/13	KL	FLB	CLIENT REVISIONS
4	03/28/15	IRWN	CSL	REV 2014 FBC
5	06/04/17	IRWN	FLB	REV 2017 FBC

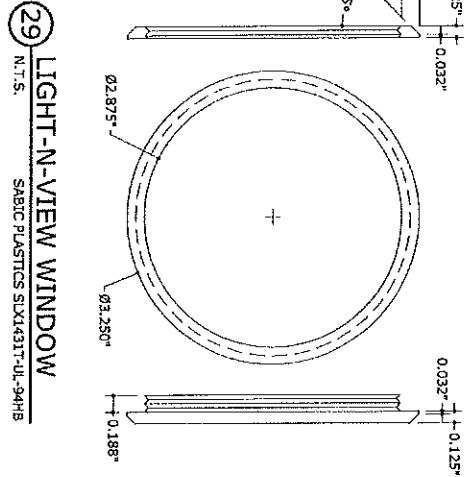
SCALE: 15-2339
TABLE SPECIFICATIONS:

Town & Country INDUSTRIES
 Wholesale Aluminum and Building Products
 400 WEST MCNAB ROAD
 FT. LAUDERDALE, FL 33309
 FL13757.2

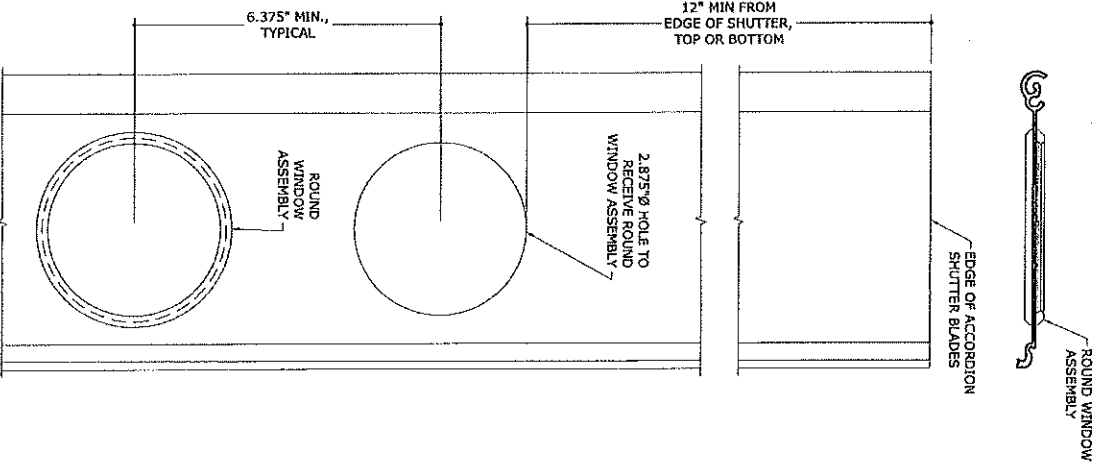
ENGINEERING EXPRESS
 CORPORATE OFFICE
 160 SW 12th AVE, SUITE 106
 DEERFIELD BEACH, FL 33442
 P: (561) 354-8888
 F: (561) 354-8889
 E: HELLO@ENGINEERINGEXPRESS.COM
 ENGINEERINGEXPRESS.COM
 CERT OF AUTH #9885



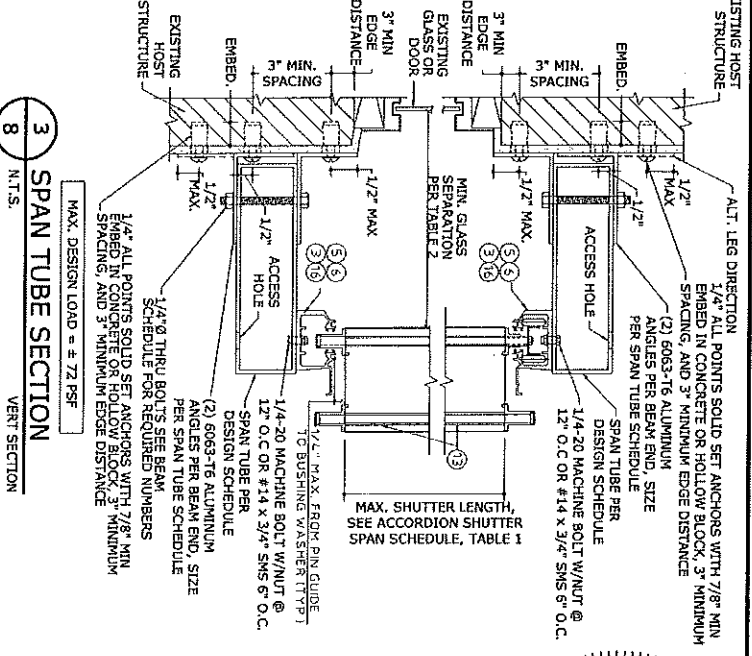
1 LIGHT-N-VIEW WINDOW
EXTERIOR ELEV.
N.T.S.



29 LIGHT-N-VIEW WINDOW
N.T.S.
SABIC PLASTICS SIX431T-UL-944H3



2 BLADE W/ ROUND WINDOW
EXTERIOR ELEV.
N.T.S.



3 SPAN TUBE SECTION
VERT SECTION
N.T.S.

TUBE SIZE	SHUTTER SPAN	ALLOWABLE TUBE SPAN		NUMBER OF THRU-BOLTS		NUMBER OF ANCHORS PER ANGLE		MINIMUM ANGLE LENGTH	
		TOP TUBE	BOTTOM TUBE	TOP TUBE	BOTTOM TUBE	TOP TUBE	BOTTOM TUBE	TOP TUBE	BOTTOM TUBE
2'-6"x 0.125"	60"	123.6"	153.2"	2	2	2	2	4"	7"
2'-6"x 0.125"	96"	101.7"	106.9"	2	2	2	2	7"	7"
2'-6"x 0.125"	123"	89.5"	94.5"	2	2	3	3	7"	7"
2'-6"x 0.125"	60"	129.1"	157.0"	2	2	2	2	4"	7"
2'-6"x 0.125"	96"	114.8"	124.1"	2	2	3	3	7"	7"
2'-6"x 0.125"	123"	102.8"	109.6"	2	2	4	4	10"	10"
2'-6"x 0.125"	60"	136.0"	196.9"	2	2	3	3	7"	7"
2'-6"x 0.125"	96"	122.7"	155.7"	2	2	3	3	4"	10"
2'-6"x 0.125"	123"	115.4"	137.5"	2	2	4	4	10"	10"
2'-6"x 0.125"	60"	158.1"	240.0"	2	2	4	4	10"	10"
2'-6"x 0.125"	96"	140.6"	226.8"	2	2	4	4	10"	10"
2'-6"x 0.125"	123"	132.2"	203.1"	3	3	5	5	10"	10"

- SPAN TUBE SCHEDULE NOTES:**
- USE 2'-x6"x1/4" ANGLES FOR 2'-x6" & 2'-x10" BEAMS.
 - USE 2'-x6"x1/4" ANGLES FOR 2'-x6" & 2'-x10" BEAMS.
 - USE BEAM SCHEDULE FOR DETAIL 318.
 - TOP & BOTTOM BEAMS MAY BE USED TOGETHER. BEAM MUST BE LIMITED TO TOP BEAM SPAN CONNECTION DETAILS. WHERE USED TOGETHER, BEAM MUST BE LIMITED TO TOP BEAM SPAN.
 - SPAN TUBES MAY BE USED IN A MID-SPAN CONDITION WITH SHUTTERS SPANNING ABOVE AND BELOW AND BELOW THE BEAM.
 - ANCHORS AND BOLTS SHALL HAVE TO BEAM LIFTATIONS (INCLUDING SPANS ABOVE AND BELOW THE BEAM).
 - LAP BEAMS ARE NOT ALLOWED.
 - ALL BEAMS AND ANGLES TO BE 6063-T6 ALUMINUM.

15-2339

DATE: 04/28/10
 DATE: 12/11/11
 DATE: 10/25/13
 DATE: 03/29/16
 DATE: 08/04/17

DRYIN: CHND
 RL: RL
 CS: FLB
 RL: FLB
 RWAN: FLB

REMARKS: THIS DOCUMENT IS THE PROPERTY OF FRANK PERINARO, P.E. AND SHALL NOT BE REPRODUCED OR TRANSMITTED IN ANY FORM OR BY ANY MEANS, ELECTRONIC OR MECHANICAL, INCLUDING PHOTOCOPYING, RECORDING, OR BY ANY INFORMATION STORAGE AND RETRIEVAL SYSTEM WITHOUT THE WRITTEN PERMISSION OF FRANK PERINARO, P.E.

Town & Country INDUSTRIES
 Wholesale Aluminum and Building Products

400 WEST MCNAB ROAD
 FT. LAUDERDALE, FL 33309

FL13757.2

ENGINEERING EXPRESS
 FRANK PERINARO, P.E.
 160 SW 12th AVE, SUITE 106
 DEERFIELD BEACH, FL 33442
 P: (954) 354-0660 F: (954) 354-0661
 E: FRANK@ENGINEERINGEXPRESS.COM
 CERT OF AUTH #9885

08/09/2017

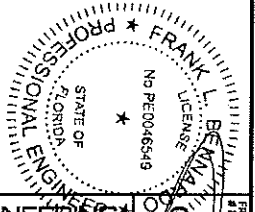
ANCHOR SCHEDULE: CONCRETE (CONT.)

HOST STRUCT.	ANCHOR	2-3/16" MIN EDGE DISTANCE																	
		Spans Up To 6'-0"			Spans Up To 8'-3"			Spans Up To 12'-0"			Spans Up To 6'-0"			Spans Up To 8'-3"			Spans Up To 12'-0"		
LOAD (lbs)	CONN TYPE	C1	C2	C3	C1	C2	C3	C1	C2	C3	C1	C2	C3	C1	C2	C3	C1	C2	C3
43	5/16" ITW TAPCON XL WITH 1-3/4" EMBED (2899psi MIN CONC)	15.0"	16.0"	16.0"	16.0"	16.0"	16.0"	16.0"	16.0"	16.0"	16.0"	16.0"	16.0"	16.0"	16.0"	16.0"	16.0"	16.0"	16.0"
53	5/16" ITW TAPCON XL WITH 1-3/4" EMBED (2899psi MIN CONC)	16.0"	16.0"	16.0"	16.0"	16.0"	16.0"	16.0"	16.0"	16.0"	16.0"	16.0"	16.0"	16.0"	16.0"	16.0"	16.0"	16.0"	16.0"
62	5/16" ITW TAPCON XL WITH 1-3/4" EMBED (2899psi MIN CONC)	16.0"	16.0"	16.0"	16.0"	16.0"	16.0"	16.0"	16.0"	16.0"	16.0"	16.0"	16.0"	16.0"	16.0"	16.0"	16.0"	16.0"	16.0"
70	5/16" ITW TAPCON XL WITH 1-3/4" EMBED (2899psi MIN CONC)	16.0"	16.0"	16.0"	16.0"	16.0"	16.0"	16.0"	16.0"	16.0"	16.0"	16.0"	16.0"	16.0"	16.0"	16.0"	16.0"	16.0"	16.0"
100	5/16" ITW TAPCON XL WITH 1-3/4" EMBED (2899psi MIN CONC)	16.0"	16.0"	16.0"	16.0"	16.0"	16.0"	16.0"	16.0"	16.0"	16.0"	16.0"	16.0"	16.0"	16.0"	16.0"	16.0"	16.0"	16.0"

ANCHOR SCHEDULE: HOLLOW CONCRETE BLOCK

HOST STRUCT.	ANCHOR	1" MIN EDGE DISTANCE																	
		Spans Up To 6'-0"			Spans Up To 8'-3"			Spans Up To 12'-0"			Spans Up To 6'-0"			Spans Up To 8'-3"			Spans Up To 12'-0"		
LOAD (lbs)	CONN TYPE	C1	C2	C3	C1	C2	C3	C1	C2	C3	C1	C2	C3	C1	C2	C3	C1	C2	C3
43	1/4" ITW TAPCON WITH 1-1/4" EMBED	8.5"	7.0"	4.0"	7.0"	4.0"	3.5"	6.0"	3.5"	3.0"	4.0"	3.5"	3.0"	4.0"	3.5"	3.0"	4.0"	3.5"	3.0"
53	1/4" ITW TAPCON WITH 1-1/4" EMBED	8.5"	7.0"	4.0"	7.0"	4.0"	3.5"	6.0"	3.5"	3.0"	4.0"	3.5"	3.0"	4.0"	3.5"	3.0"	4.0"	3.5"	3.0"
62	1/4" ITW TAPCON WITH 1-1/4" EMBED	8.5"	7.0"	4.0"	7.0"	4.0"	3.5"	6.0"	3.5"	3.0"	4.0"	3.5"	3.0"	4.0"	3.5"	3.0"	4.0"	3.5"	3.0"
70	1/4" ITW TAPCON WITH 1-1/4" EMBED	8.5"	7.0"	4.0"	7.0"	4.0"	3.5"	6.0"	3.5"	3.0"	4.0"	3.5"	3.0"	4.0"	3.5"	3.0"	4.0"	3.5"	3.0"
100	1/4" ITW TAPCON WITH 1-1/4" EMBED	8.5"	7.0"	4.0"	7.0"	4.0"	3.5"	6.0"	3.5"	3.0"	4.0"	3.5"	3.0"	4.0"	3.5"	3.0"	4.0"	3.5"	3.0"

ANCHOR NOTES: SEE SHEET 9 FOR ANCHOR NOTES.



ENGINEERING EXPRESS
 CORPORATE OFFICE:
 160 SW 12th AVE, SUITE 106
 DEERFIELD BEACH, FL 33442
 P: (561) 998-1545 F: (561) 998-1546
 E: HELLO@ENGINEERINGEXPRESS.COM
 ENGINEERINGEXPRESS.COM
 CERT OF AUTH #9885

Town & Country INDUSTRIES
 Wholesale Aluminum and Building Products
 A Division of AGC Supply Co., Inc.
 400 WEST MCNAB ROAD
 FT. LAUDERDALE, FL 33309 FL13757.2

10

REVISIONS:
 DATE: 04/25/10
 BY: FLS
 CHECKED: FLS
 DATE: 12/18/11
 BY: FLS
 CHECKED: FLS
 DATE: 03/29/15
 BY: FLS
 CHECKED: FLS
 DATE: 06/04/17
 BY: FLS
 CHECKED: FLS

SCALE: 15-2339

DATE: 08/09/2017

ANCHOR SCHEDULE: HOLLOW CONCRETE BLOCK

HOST STRUCT.	ANCHOR	LOAD (psf)	3/4" MIN EDGE DISTANCE											
			Spans Up To 6'-0"			Spans Up To 8'-3"			Spans Up To 12'-0"			Spans Up To 12'-0"		
			C1	C2	C3	C1	C2	C3	C1	C2	C3	C1	C2	C3
HOLLOW BLOCK	#12 SWS W/ 2" EMBEDD ARMOR INSERT W/ 1-1/4" EMBED	43	16.0'	16.0'	16.0'	7.5'	9.0'	10.5'	8.5'	4.5'	6.5'	11.5'	8.5'	4.5'
		53	16.0'	16.0'	16.0'	5.0'	7.0'	10.0'	6.0'	3.5'	5.0'	11.0'	7.0'	3.5'
		62	14.0'	7.5'	4.0'	4.0'	14.5'	9.0'	4.5'	4.0'	7.0'	3.5'	3.5'	5.0'
		70	11.5'	6.0'	3.5'	5.5'	12.5'	7.5'	3.5'	5.5'	7.0'	3.5'	3.5'	5.0'
		100	7.0'	3.5'	3.5'	5.5'	7.0'	3.5'	3.5'	5.0'	7.0'	3.5'	3.5'	5.0'

ANCHOR SCHEDULE: WOOD (G=0.55)

HOST STRUCT.	ANCHOR	LOAD (psf)	3/4" MIN EDGE DISTANCE												
			Spans Up To 6'-0"			Spans Up To 8'-3"			Spans Up To 12'-0"			Spans Up To 12'-0"			
			C1	C2	C3	C1	C2	C3	C1	C2	C3	C1	C2	C3	
WOOD (G=0.55)	#14 SWS OR #14 WOOD SCREW WITH 1-3/4" MIN THREAD PENETRATION	43	16.0'	16.0'	11.5'	12.5'	16.0'	16.0'	7.5'	9.0'	15.0'	14.5'	4.5'	6.0'	
		53	16.0'	16.0'	8.5'	10.0'	16.0'	16.0'	14.5'	5.0'	6.0'	16.0'	11.5'	4.0'	5.0'
		62	16.0'	16.0'	7.0'	6.5'	16.0'	16.0'	14.5'	4.0'	5.5'	16.0'	11.5'	4.0'	5.0'
		70	16.0'	16.0'	6.0'	7.5'	16.0'	16.0'	12.5'	4.0'	5.0'	16.0'	11.5'	4.0'	5.0'
		100	16.0'	16.0'	4.0'	5.0'	16.0'	16.0'	11.5'	4.0'	5.0'	16.0'	11.5'	4.0'	5.0'
		43	16.0'	16.0'	8.0'	10.0'	16.0'	16.0'	15.0'	4.5'	5.0'	16.0'	11.5'	4.0'	5.0'
		53	16.0'	16.0'	5.5'	6.0'	16.0'	16.0'	14.5'	4.5'	5.0'	16.0'	11.5'	4.0'	5.0'
		62	16.0'	16.0'	4.5'	5.5'	16.0'	16.0'	14.5'	4.5'	5.0'	16.0'	11.5'	4.0'	5.0'
		70	16.0'	16.0'	3.5'	4.5'	16.0'	16.0'	14.5'	4.5'	5.0'	16.0'	11.5'	4.0'	5.0'
		100	16.0'	16.0'	2.5'	3.5'	16.0'	16.0'	14.5'	4.5'	5.0'	16.0'	11.5'	4.0'	5.0'

ANCHOR SCHEDULE: WOOD (G=0.42)

HOST STRUCT.	ANCHOR	LOAD (psf)	3/4" MIN EDGE DISTANCE												
			Spans Up To 6'-0"			Spans Up To 8'-3"			Spans Up To 12'-0"			Spans Up To 12'-0"			
			C1	C2	C3	C1	C2	C3	C1	C2	C3	C1	C2	C3	
WOOD (G=0.42)	#14 LAS SCREW WITH 1-3/4" MIN THREAD PENETRATION	43	16.0'	16.0'	9.0'	10.0'	16.0'	16.0'	5.5'	7.0'	16.0'	16.0'	9.5'	4.5'	
		53	16.0'	16.0'	6.5'	8.0'	16.0'	16.0'	12.5'	4.5'	5.5'	16.0'	15.0'	3.0'	4.0'
		62	16.0'	16.0'	5.5'	6.5'	16.0'	16.0'	9.5'	3.5'	5.0'	15.0'	7.5'	3.0'	4.0'
		70	16.0'	16.0'	4.5'	6.0'	16.0'	16.0'	8.0'	4.0'	11.5'	15.0'	7.5'	3.0'	4.0'
		100	16.0'	16.0'	3.0'	4.0'	11.0'	15.0'	7.5'	3.0'	4.0'	11.0'	15.0'	3.0'	4.0'
		43	16.0'	16.0'	8.5'	10.5'	16.0'	16.0'	12.5'	5.5'	7.0'	16.0'	13.0'	6.5'	3.5'
		53	16.0'	16.0'	6.5'	8.0'	16.0'	16.0'	10.5'	4.0'	5.5'	16.0'	10.5'	5.5'	2.5'
		62	16.0'	16.0'	5.0'	7.0'	16.0'	16.0'	13.0'	3.5'	5.0'	10.5'	10.5'	5.5'	2.5'
		70	16.0'	16.0'	4.5'	6.0'	16.0'	16.0'	13.0'	3.0'	4.0'	8.0'	10.5'	5.5'	2.5'
		100	16.0'	16.0'	2.5'	4.0'	7.5'	10.5'	5.5'	2.5'	4.0'	7.5'	10.5'	5.5'	2.5'

ANCHOR SCHEDULE: GROUT-FILLED CONCRETE BLOCK

HOST STRUCT.	ANCHOR	LOAD (psf)	3/4" MIN EDGE DISTANCE											
			Spans Up To 6'-0"			Spans Up To 8'-3"			Spans Up To 12'-0"			Spans Up To 12'-0"		
			C1	C2	C3	C1	C2	C3	C1	C2	C3	C1	C2	C3
GROUT-FILLED CONCRETE BLOCK	#12 SWS W/ 2" EMBEDD ARMOR INSERT W/ 2" EMBED	43	16.0'	16.0'	16.0'	16.0'	16.0'	16.0'	16.0'	16.0'	16.0'	16.0'	16.0'	16.0'
		53	16.0'	16.0'	16.0'	16.0'	16.0'	16.0'	16.0'	16.0'	16.0'	16.0'	16.0'	16.0'
		62	16.0'	16.0'	16.0'	16.0'	16.0'	16.0'	16.0'	16.0'	16.0'	16.0'	16.0'	16.0'
		70	16.0'	16.0'	16.0'	16.0'	16.0'	16.0'	16.0'	16.0'	16.0'	16.0'	16.0'	16.0'
		100	16.0'	16.0'	16.0'	16.0'	16.0'	16.0'	16.0'	16.0'	16.0'	16.0'	16.0'	16.0'
		43	16.0'	16.0'	16.0'	16.0'	16.0'	16.0'	16.0'	16.0'	16.0'	16.0'	16.0'	16.0'
		53	16.0'	16.0'	16.0'	16.0'	16.0'	16.0'	16.0'	16.0'	16.0'	16.0'	16.0'	16.0'
		62	16.0'	16.0'	16.0'	16.0'	16.0'	16.0'	16.0'	16.0'	16.0'	16.0'	16.0'	16.0'
		70	16.0'	16.0'	16.0'	16.0'	16.0'	16.0'	16.0'	16.0'	16.0'	16.0'	16.0'	16.0'
		100	16.0'	16.0'	16.0'	16.0'	16.0'	16.0'	16.0'	16.0'	16.0'	16.0'	16.0'	16.0'

ANCHOR NOTES: SEE SHEET 9 FOR ANCHOR NOTES.

FRANK L. BERNARDO, P.E.
 PROFESSIONAL ENGINEER
 STATE OF FLORIDA
 No PE0046544
 BEAR 08/09/2017

ENGINEERING EXPRESS
 CORPORATE OFFICE:
 160 SW 12th AVE, SUITE 106
 DEERFIELD BEACH, FL 33442
 P (954) 354-4666 F (954) 354-0443
 E: HELLO@ENGINEERINGEXPRESS.COM
 ENGINEERINGEXPRESS.COM
 CERT OF AUTH #9885

Town & Country INDUSTRIES
 Wholesale Aluminum and Building Products
 400 WEST MCNAB ROAD
 FT. LAUDERDALE, FL 33309
 FL13757.2

REMARKS: DRAWN: CHRD DATE: 04/28/16
 NIT: FLS KFL FLS 12/16/11
 2016 FBC (10-TCM-0002) CSL FLS 10/25/13
 CLIENT REVISIONS: NLT FLS 03/29/16
 REV (2014 FBC) RWN CSL 03/29/16
 REV (2017 FBC) RWN FLS 06/04/17

SCALE: 15-2339
 DATE: 06/09/2017