

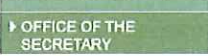


[BCIS Home](#) | [Log In](#) | [User Registration](#) | [Hot Topics](#) | [Submit Surcharge](#) | [Stats & Facts](#) | [Publications](#) | [Contact Us](#) | [BCIS Site Map](#) | [Links](#) | [Search](#)



Product Approval
USER: Public User

[Product Approval Menu](#) > [Product or Application Search](#) > [Application List](#) > [Application Detail](#)



FL #	FL26980														
Application Type	New														
Code Version	2017														
Application Status	Approved														
Comments															
Archived	<input type="checkbox"/>														
Product Manufacturer	Advanced Hurricane Technology Inc.														
Address/Phone/Email	6063 Janes Lane Naples, FL 34109 (239) 594-7722 jzabala@aol.com														
Authorized Signature	Jaime Zabala jzabala@aol.com														
Technical Representative	Dave Finnegan														
Address/Phone/Email	6063 Janes Lane Naples, FL 34109 (239) 594-7722 Finnegan1of10@aol.com														
Quality Assurance Representative															
Address/Phone/Email															
Category	Impact Protective Systems														
Subcategory	Operable														
Compliance Method	Evaluation Report from a Florida Registered Architect or a Licensed Florida Professional Engineer <input type="checkbox"/> Evaluation Report - Hardcopy Received														
Florida Engineer or Architect Name who developed the Evaluation Report	Pedro De Figuereido														
Florida License	PE-52609														
Quality Assurance Entity	National Accreditation and Management Institute														
Quality Assurance Contract Expiration Date	12/31/2020														
Validated By	Jesus Gonzalez, P.E. <input checked="" type="checkbox"/> Validation Checklist - Hardcopy Received														
Certificate of Independence	FL26980 R0 COI 18-103 CI.pdf														
Referenced Standard and Year (of Standard)	<table border="0"> <thead> <tr> <th>Standard</th> <th>Year</th> </tr> </thead> <tbody> <tr> <td>ASTM E1886</td> <td>2005</td> </tr> <tr> <td>ASTM E1996</td> <td>2006</td> </tr> <tr> <td>ASTM E330</td> <td>2002</td> </tr> <tr> <td>TAS 201</td> <td>1994</td> </tr> <tr> <td>TAS 202</td> <td>1994</td> </tr> <tr> <td>TAS 203</td> <td>1994</td> </tr> </tbody> </table>	Standard	Year	ASTM E1886	2005	ASTM E1996	2006	ASTM E330	2002	TAS 201	1994	TAS 202	1994	TAS 203	1994
Standard	Year														
ASTM E1886	2005														
ASTM E1996	2006														
ASTM E330	2002														
TAS 201	1994														
TAS 202	1994														
TAS 203	1994														

Equivalence of Product Standards
 Certified By

Sections from the Code

Product Approval Method Method 1 Option D

Date Submitted 04/19/2018
 Date Validated 04/27/2018
 Date Pending FBC Approval 04/29/2018
 Date Approved 06/12/2018

Summary of Products

FL #	Model, Number or Name	Description
26980.1	58mm Rolling Door System	Extruded Aluminum Impact Protective System SMI & LMI
Limits of Use Approved for use in HVHZ: Yes Approved for use outside HVHZ: Yes Impact Resistant: Yes Design Pressure: +200/-200 Other: Product to be manufactured, designed and installed as per dwg specification 18-103		Installation Instructions FL26980_R0_II_18-103_dwg.pdf Verified By: Pedro De Figueiredo PE 52609 Created by Independent Third Party: Yes Evaluation Reports FL26980_R0_AE_18-103_PER (2).pdf Created by Independent Third Party: Yes

[Back](#) [Next](#)

[Contact Us](#) :: 2601 Blair Stone Road, Tallahassee FL 32399 Phone: 850-487-1824

The State of Florida is an AA/EEO employer. [Copyright 2007-2013 State of Florida](#). :: [Privacy Statement](#) :: [Accessibility Statement](#) :: [Refund Statement](#)

Under Florida law, email addresses are public records. If you do not want your e-mail address released in response to a public-records request, do not send electronic mail to this entity. Instead, contact the office by phone or by traditional mail. If you have any questions, please contact 850.487.1395. *Pursuant to Section 455.275 (1), Florida Statutes, effective October 1, 2012, licensees licensed under Chapter 455, F.S. must provide the Department with an email address if they have one. The emails provided may be used for official communication with the licensee. However email addresses are public record. If you do not wish to supply a personal address, please provide the Department with an email address which can be made available to the public. To determine if you are a licensee under Chapter 455, F.S., please click [here](#).

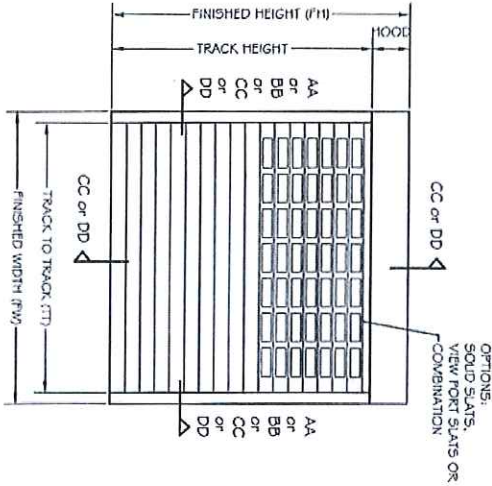
Product Approval Accepts:



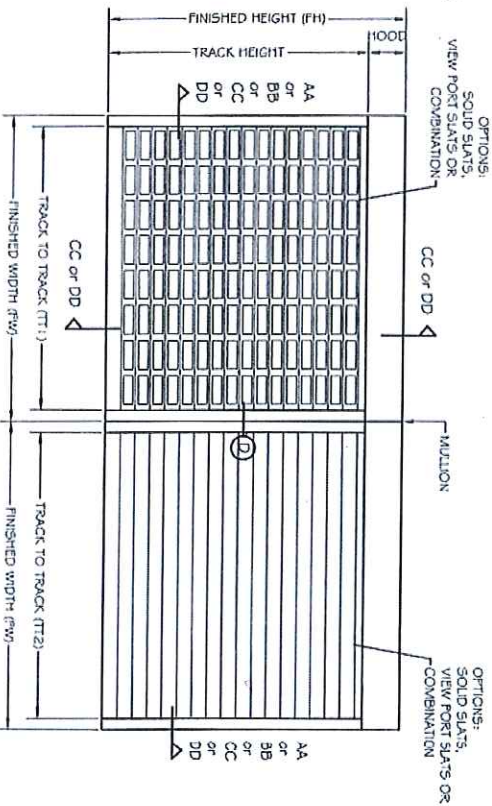
Credit Card
Safe


TYPICAL ELEVATIONS

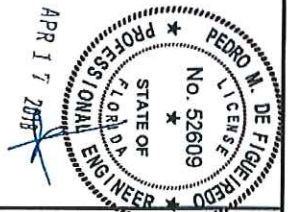
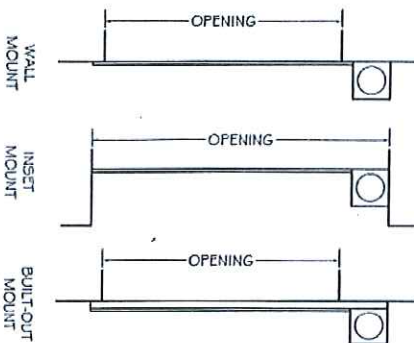
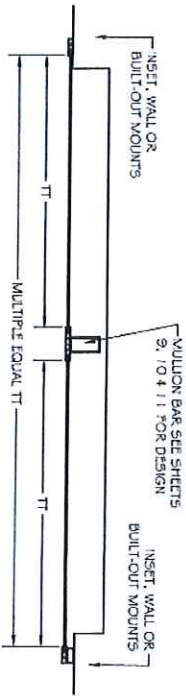
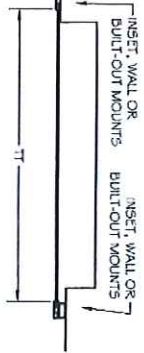
TYPICAL SINGLE UNIT ELEVATION



TYPICAL MULTIPLE UNITS ELEVATION

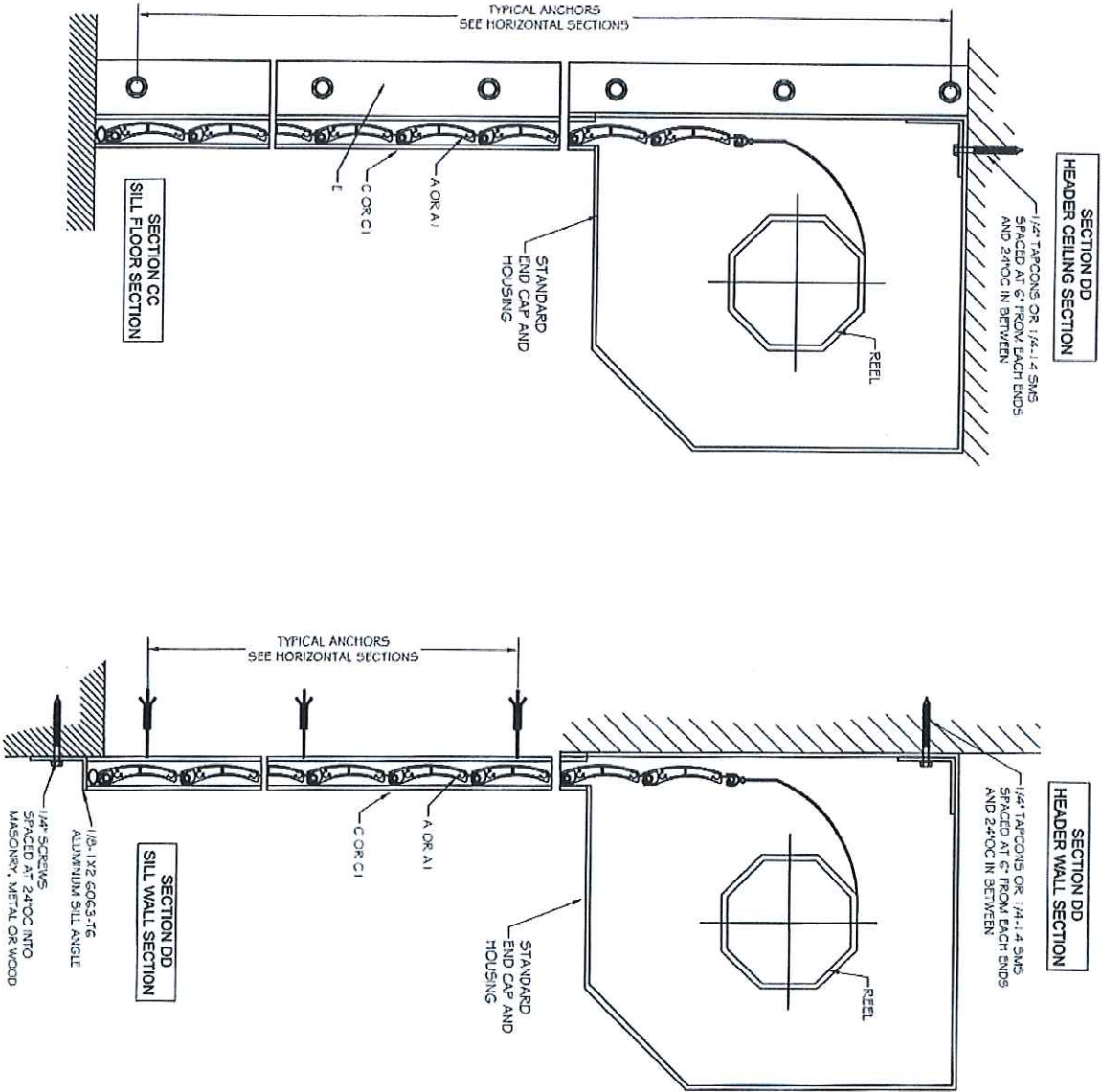


TT1 = TT2

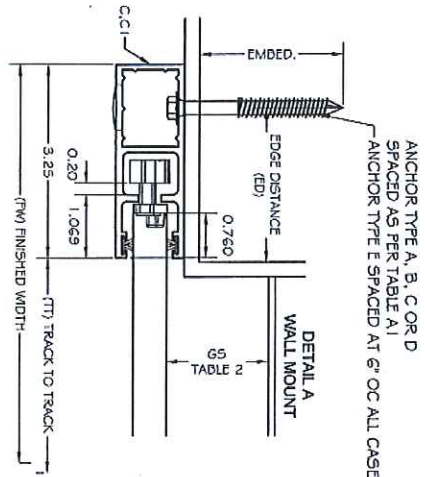


<p>SCALE: NA DATE: 02/25/18 DRAWING # 18-103 SHEET 2 OF 12</p>	<p>AHT MANUFACTURER: ADVANCED HURRICANE TECHNOLOGIES 6043 JAMES LANE NAPLES, FLORIDA 34109 TEL: (239) 260-0020</p>	<p>PRODUCT NAME: WIND ABATEMENT SYSTEM - LARGE MISSILE 58 MM ROLLING DOOR SYSTEM</p>	<p>PPMF Inc. ENGINEERING SERVICES - CA 32459 9715 W. BROWARD BLVD. PLANTATION, FL 33324 PPMF@AOL.COM</p> <p>REGISTERED PROFESSIONAL ENGINEER PEDRO DE FIGUEIREDO PE 52609</p>
--	--	---	--

TYPICAL VERTICAL SECTIONS



<p>4 OF 12 SHEET</p>	<p>SCALE: N/A</p>	<p>AHT MANUFACTURER: ADVANCED HURRICANE TECHNOLOGIES 6063 JAMES LANE NAPLES, FLORIDA 34109 TEL: (239) 260-0020</p>	<p>PRODUCT NAME: WIND ABATEMENT SYSTEM - LARGE MISSILE 56 MM ROLLING DOOR SYSTEM</p>	<p>PPMF Inc. ENGINEERING SERVICES - CA 32459 9715 W. BROWARD BLVD. PLANTATION, FL 33324 PPMF@AOL.COM</p> <p>ENGINEER SEAL PEDRO DE FIGUEREDO PE 52609</p>
--------------------------	-------------------	---	---	--



ANCHOR SCHEDULE:			
ANCHOR	DESCRIPTION	MATERIAL	EMBEDMENT
A	5/16" TITW TAPCONS XL	MIN. 3000 PSI CONCRETE	2 1/4"
B	5/16" TITW TAPCONS XL	GROUT FILLED C-90 BLOCK	2 1/4"
C	1/4" - 14x1" GRADE 5 SELF DRILLING SCREWS	MIN. 1/4" 6063-T6 ALUM.	1/2"
D	5/16"x3" TAPCONS	WOOD WITH G ₂ = 5.5	3/8"
E	3/8" POWERS WEDGE BOLT	MIN. 3000 PSI CONCRETE	3 1/2"

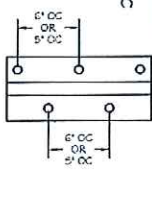
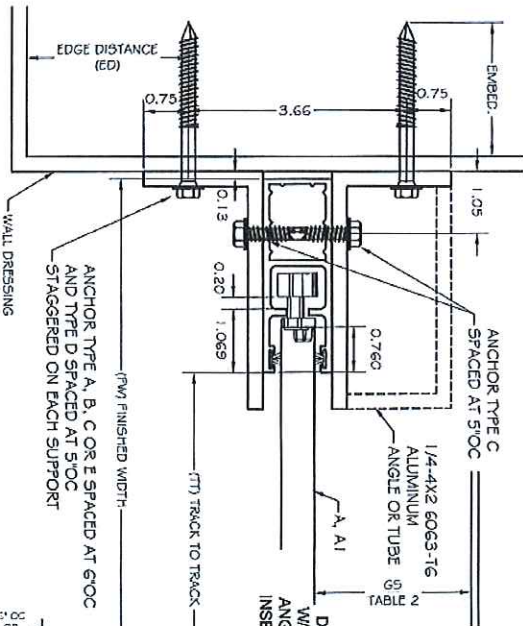
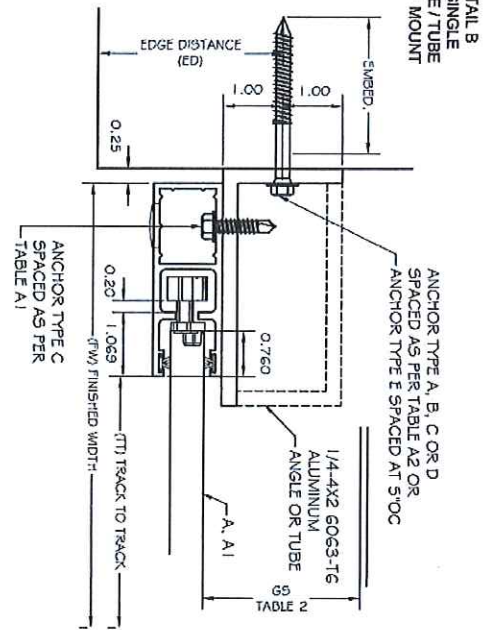
TABLE A1
SPACING ON CENTER FOR WALL MOUNT INSTALLATION

LOAD (PSF)	TRACK TO TRACK (INCHES)														
	60			72			84			96			108		
	A	B	C	A	B	C	A	B	C	A	B	C	A	B	C
20	6.0	6.0	6.0	6.0	6.0	6.0	6.0	6.0	6.0	6.0	6.0	6.0	6.0	6.0	6.0
30	6.0	6.0	6.0	6.0	6.0	6.0	6.0	6.0	6.0	6.0	6.0	6.0	6.0	6.0	6.0
40	6.0	6.0	6.0	6.0	6.0	6.0	6.0	6.0	6.0	6.0	6.0	6.0	6.0	6.0	6.0
50	6.0	6.0	6.0	6.0	6.0	6.0	6.0	6.0	6.0	6.0	6.0	6.0	6.0	6.0	6.0
60	6.0	6.0	6.0	6.0	6.0	6.0	6.0	6.0	6.0	6.0	6.0	6.0	6.0	6.0	6.0
70	6.0	6.0	6.0	6.0	6.0	6.0	6.0	6.0	6.0	6.0	6.0	6.0	6.0	6.0	6.0
80	6.0	6.0	6.0	6.0	6.0	6.0	6.0	6.0	6.0	6.0	6.0	6.0	6.0	6.0	6.0
90	6.0	6.0	6.0	6.0	6.0	6.0	6.0	6.0	6.0	6.0	6.0	6.0	6.0	6.0	6.0
100	6.0	6.0	6.0	6.0	6.0	6.0	6.0	6.0	6.0	6.0	6.0	6.0	6.0	6.0	6.0
110	6.0	6.0	6.0	6.0	6.0	6.0	6.0	6.0	6.0	6.0	6.0	6.0	6.0	6.0	6.0
120	6.0	6.0	6.0	6.0	6.0	6.0	6.0	6.0	6.0	6.0	6.0	6.0	6.0	6.0	6.0
130	6.0	6.0	6.0	6.0	6.0	6.0	6.0	6.0	6.0	6.0	6.0	6.0	6.0	6.0	6.0
140	6.0	6.0	6.0	6.0	6.0	6.0	6.0	6.0	6.0	6.0	6.0	6.0	6.0	6.0	6.0
150	6.0	6.0	6.0	6.0	6.0	6.0	6.0	6.0	6.0	6.0	6.0	6.0	6.0	6.0	6.0
160	6.0	6.0	6.0	6.0	6.0	6.0	6.0	6.0	6.0	6.0	6.0	6.0	6.0	6.0	6.0
170	6.0	6.0	6.0	6.0	6.0	6.0	6.0	6.0	6.0	6.0	6.0	6.0	6.0	6.0	6.0
180	6.0	6.0	6.0	6.0	6.0	6.0	6.0	6.0	6.0	6.0	6.0	6.0	6.0	6.0	6.0
190	6.0	6.0	6.0	6.0	6.0	6.0	6.0	6.0	6.0	6.0	6.0	6.0	6.0	6.0	6.0
200	6.0	6.0	6.0	6.0	6.0	6.0	6.0	6.0	6.0	6.0	6.0	6.0	6.0	6.0	6.0



	MANUFACTURER: ADVANCED HURRICANE TECHNOLOGIES 6063 JAMES LANE NAPLES, FLORIDA 34109 TEL: (239) 260-0020	PRODUCT NAME: WIND ABATEMENT SYSTEM - LARGE MISSILE 56 MM ROLLING DOOR SYSTEM
SCALE: NA DATE: 02/25/18 DRAWING #: 18-103 SHEET: 5 OF 12	ENGINEER SEAL: PEDRO DE FIGUEREDO PE 52609	PPMF Inc. ENGINEERING SERVICES - CA 32459 9715 W. BROWARD BLVD. PLANTATION, FL 33324 PPMF@AOL.COM

**DETAIL B
W/ SINGLE
ANGLE / TUBE
INSET MOUNT**



**TABLE A2
SPACING ON CENTER FOR INSET MOUNT INSTALLATION W/ ONE SUPPORT**

LOAD PER FOOT	60					72					84					96					108					TRACK TO TRACK (INCHES)					120					144					168					216					264					288				
	A	B	C	D	E	A	B	C	D	E	A	B	C	D	E	A	B	C	D	E	A	B	C	D	E	A	B	C	D	E	A	B	C	D	E	A	B	C	D	E	A	B	C	D	E	A	B	C	D	E										
20	6.0	6.0	6.0	6.0	6.0	6.0	6.0	6.0	6.0	6.0	6.0	6.0	6.0	6.0	6.0	6.0	6.0	6.0	6.0	6.0	6.0	6.0	6.0	6.0	6.0	6.0	6.0	6.0	6.0	6.0	6.0	6.0	6.0	6.0	6.0	6.0	6.0	6.0	6.0	6.0	6.0	6.0	6.0	6.0	6.0	6.0	6.0	6.0	6.0	6.0	6.0	6.0	6.0	6.0	6.0	6.0	6.0	6.0	6.0	6.0
40	6.0	6.0	6.0	6.0	6.0	6.0	6.0	6.0	6.0	6.0	6.0	6.0	6.0	6.0	6.0	6.0	6.0	6.0	6.0	6.0	6.0	6.0	6.0	6.0	6.0	6.0	6.0	6.0	6.0	6.0	6.0	6.0	6.0	6.0	6.0	6.0	6.0	6.0	6.0	6.0	6.0	6.0	6.0	6.0	6.0	6.0	6.0	6.0	6.0	6.0	6.0	6.0	6.0	6.0	6.0	6.0	6.0	6.0	6.0	6.0
60	6.0	6.0	6.0	6.0	6.0	6.0	6.0	6.0	6.0	6.0	6.0	6.0	6.0	6.0	6.0	6.0	6.0	6.0	6.0	6.0	6.0	6.0	6.0	6.0	6.0	6.0	6.0	6.0	6.0	6.0	6.0	6.0	6.0	6.0	6.0	6.0	6.0	6.0	6.0	6.0	6.0	6.0	6.0	6.0	6.0	6.0	6.0	6.0	6.0	6.0	6.0	6.0	6.0	6.0	6.0	6.0	6.0	6.0	6.0	6.0
80	6.0	6.0	6.0	6.0	6.0	6.0	6.0	6.0	6.0	6.0	6.0	6.0	6.0	6.0	6.0	6.0	6.0	6.0	6.0	6.0	6.0	6.0	6.0	6.0	6.0	6.0	6.0	6.0	6.0	6.0	6.0	6.0	6.0	6.0	6.0	6.0	6.0	6.0	6.0	6.0	6.0	6.0	6.0	6.0	6.0	6.0	6.0	6.0	6.0	6.0	6.0	6.0	6.0	6.0	6.0	6.0	6.0	6.0	6.0	6.0
100	6.0	6.0	6.0	6.0	6.0	6.0	6.0	6.0	6.0	6.0	6.0	6.0	6.0	6.0	6.0	6.0	6.0	6.0	6.0	6.0	6.0	6.0	6.0	6.0	6.0	6.0	6.0	6.0	6.0	6.0	6.0	6.0	6.0	6.0	6.0	6.0	6.0	6.0	6.0	6.0	6.0	6.0	6.0	6.0	6.0	6.0	6.0	6.0	6.0	6.0	6.0	6.0	6.0	6.0	6.0	6.0	6.0	6.0	6.0	6.0
120	6.0	6.0	6.0	6.0	6.0	6.0	6.0	6.0	6.0	6.0	6.0	6.0	6.0	6.0	6.0	6.0	6.0	6.0	6.0	6.0	6.0	6.0	6.0	6.0	6.0	6.0	6.0	6.0	6.0	6.0	6.0	6.0	6.0	6.0	6.0	6.0	6.0	6.0	6.0	6.0	6.0	6.0	6.0	6.0	6.0	6.0	6.0	6.0	6.0	6.0	6.0	6.0	6.0	6.0	6.0					
140	6.0	6.0	6.0	6.0	6.0	6.0	6.0	6.0	6.0	6.0	6.0	6.0	6.0	6.0	6.0	6.0	6.0	6.0	6.0	6.0	6.0	6.0	6.0	6.0	6.0	6.0	6.0	6.0	6.0	6.0	6.0	6.0	6.0	6.0	6.0	6.0	6.0	6.0	6.0	6.0	6.0	6.0	6.0	6.0	6.0	6.0	6.0	6.0	6.0	6.0	6.0	6.0	6.0	6.0	6.0					
160	6.0	6.0	6.0	6.0	6.0	6.0	6.0	6.0	6.0	6.0	6.0	6.0	6.0	6.0	6.0	6.0	6.0	6.0	6.0	6.0	6.0	6.0	6.0	6.0	6.0	6.0	6.0	6.0	6.0	6.0	6.0	6.0	6.0	6.0	6.0	6.0	6.0	6.0	6.0	6.0	6.0	6.0	6.0	6.0	6.0	6.0	6.0	6.0	6.0	6.0	6.0	6.0	6.0	6.0	6.0					
180	6.0	6.0	6.0	6.0	6.0	6.0	6.0	6.0	6.0	6.0	6.0	6.0	6.0	6.0	6.0	6.0	6.0	6.0	6.0	6.0	6.0	6.0	6.0	6.0	6.0	6.0	6.0	6.0	6.0	6.0	6.0	6.0	6.0	6.0	6.0	6.0	6.0	6.0	6.0	6.0	6.0	6.0	6.0	6.0	6.0	6.0	6.0	6.0	6.0	6.0	6.0	6.0	6.0	6.0	6.0					
200	6.0	6.0	6.0	6.0	6.0	6.0	6.0	6.0	6.0	6.0	6.0	6.0	6.0	6.0	6.0	6.0	6.0	6.0	6.0	6.0	6.0	6.0	6.0	6.0	6.0	6.0	6.0	6.0	6.0	6.0	6.0	6.0	6.0	6.0	6.0	6.0	6.0	6.0	6.0	6.0	6.0	6.0	6.0	6.0	6.0	6.0	6.0	6.0	6.0	6.0	6.0	6.0	6.0	6.0	6.0					

ANCHOR SCHEDULE:

ANCHOR	DESCRIPTION	MATERIAL	EMBEDMENT	EDGE DISTANCE
A	5/16" T/W TAPCONS XL	MIN. 3000 PSI CONCRETE	2 1/4"	2 3/16"
B	5/16" T/W TAPCONS XL	GROUT FILLED C90 BLOCK	2 1/4"	4"
C	1/4"-1 1/2" GRADE 5 SELF DRILLING SCREWS	MIN. 1/2" 6063-T6 ALUM.	1 1/2"	3/8"
D	5/16"x3 TAPCONS	OR A56 3/16" STEEL WOOD WITH G=2.55	2 1/4"	1-1/4"
E	3/8" POWERS WEDGE BOLT	MIN. 3000 PSI CONCRETE	3 1/2"	4-1/2"

AHT
MANUFACTURER:
ADVANCED HURRICANE TECHNOLOGIES
6063 JANE5 LANE
NAPLES, FLORIDA 34109
TEL: (239) 260-0020

PRODUCT NAME:
WIND ABATEMENT SYSTEM - LARGE MISSILE
58 MM ROLLING DOOR SYSTEM

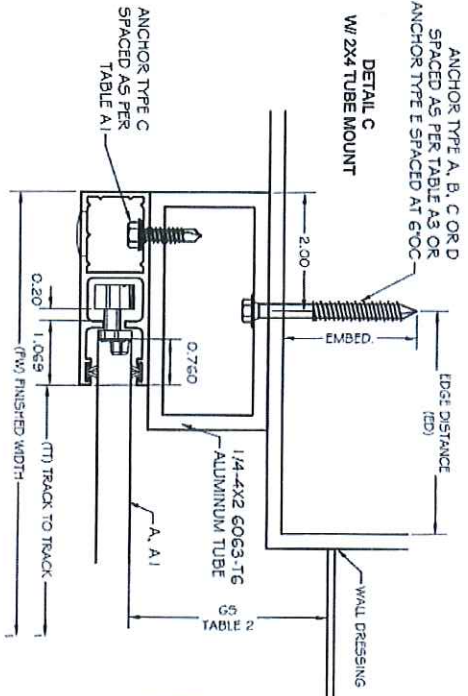
PPMF Inc.
ENGINEERING SERVICES CA 32459
9715 W. BROWARD BLVD.
PLANTATION, FL 33324
PPMF@AOL.COM

ENGINEER SEAL
PEDRO DE FIGUEREDO
FL 52609

DATE: 02/25/18
DRAWING # 15-105
SHEET

SCALE: N/A

6 OF 12



ANCHOR SCHEDULE:

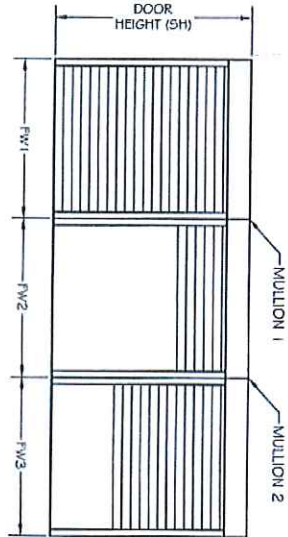
ANCHOR	DESCRIPTION	MATERIAL	EMBEDMENT	EDGE DISTANCE
A	5/16" T/W TACCONS XL	MIN. 3000 PSI CONCRETE	2 1/4"	2 3/4"
B	3/16" T/W TACCONS XL	GROUT/TILED C-50 BLOCK	2 1/4"	4"
C	1/4" - 1/4" GRADE 5 SELF-DRILLING SCREWS	MIN. 1/4" 6063-T6 ALUM. OR A36 3/16" STEEL	1 1/2"	3/8"
D	5/16" X 3 TACCONS	WOOD WITH G > = .55	2 1/2"	1 - 1/4"
E	3/8" POWERS WEDGE BOLT	MIN. 3000 PSI CONCRETE	3 1/2"	4 - 1/2"

TABLES
SPACING ON CENTER FOR 2X BUILT-OUT MOUNT INSTALLATION

LOAD (psf)	60								72								84								96								108								120								144								168								216								264								288							
	A	B	C	D	A	B	C	D	A	B	C	D	A	B	C	D	A	B	C	D	A	B	C	D	A	B	C	D	A	B	C	D	A	B	C	D	A	B	C	D	A	B	C	D	A	B	C	D	A	B	C	D	A	B	C	D	A	B	C	D	A	B	C	D	A	B	C	D	A	B	C	D	A	B	C	D	A	B	C	D								
20	6.0	6.0	6.0	6.0	6.0	6.0	6.0	6.0	6.0	6.0	6.0	6.0	6.0	6.0	6.0	6.0	6.0	6.0	6.0	6.0	6.0	6.0	6.0	6.0	6.0	6.0	6.0	6.0	6.0	6.0	6.0	6.0	6.0	6.0	6.0	6.0	6.0	6.0	6.0	6.0	6.0	6.0	6.0	6.0	6.0	6.0	6.0	6.0	6.0	6.0	6.0	6.0	6.0	6.0	6.0	6.0	6.0	6.0	6.0	6.0	6.0	6.0	6.0	6.0																								
30	8.0	8.0	8.0	8.0	8.0	8.0	8.0	8.0	8.0	8.0	8.0	8.0	8.0	8.0	8.0	8.0	8.0	8.0	8.0	8.0	8.0	8.0	8.0	8.0	8.0	8.0	8.0	8.0	8.0	8.0	8.0	8.0	8.0	8.0	8.0	8.0	8.0	8.0	8.0	8.0	8.0	8.0	8.0	8.0	8.0	8.0	8.0	8.0	8.0	8.0	8.0	8.0	8.0	8.0	8.0	8.0	8.0	8.0	8.0	8.0																												
40	10.0	10.0	10.0	10.0	10.0	10.0	10.0	10.0	10.0	10.0	10.0	10.0	10.0	10.0	10.0	10.0	10.0	10.0	10.0	10.0	10.0	10.0	10.0	10.0	10.0	10.0	10.0	10.0	10.0	10.0	10.0	10.0	10.0	10.0	10.0	10.0	10.0	10.0	10.0	10.0	10.0	10.0	10.0	10.0	10.0	10.0	10.0	10.0	10.0	10.0	10.0	10.0	10.0	10.0	10.0	10.0																																
50	12.0	12.0	12.0	12.0	12.0	12.0	12.0	12.0	12.0	12.0	12.0	12.0	12.0	12.0	12.0	12.0	12.0	12.0	12.0	12.0	12.0	12.0	12.0	12.0	12.0	12.0	12.0	12.0	12.0	12.0	12.0	12.0	12.0	12.0	12.0	12.0	12.0	12.0	12.0	12.0	12.0	12.0	12.0	12.0	12.0	12.0	12.0	12.0	12.0	12.0	12.0	12.0	12.0	12.0	12.0	12.0																																
60	14.0	14.0	14.0	14.0	14.0	14.0	14.0	14.0	14.0	14.0	14.0	14.0	14.0	14.0	14.0	14.0	14.0	14.0	14.0	14.0	14.0	14.0	14.0	14.0	14.0	14.0	14.0	14.0	14.0	14.0	14.0	14.0	14.0	14.0	14.0	14.0	14.0	14.0	14.0	14.0	14.0	14.0	14.0	14.0	14.0	14.0	14.0	14.0	14.0	14.0	14.0	14.0																																				
70	16.0	16.0	16.0	16.0	16.0	16.0	16.0	16.0	16.0	16.0	16.0	16.0	16.0	16.0	16.0	16.0	16.0	16.0	16.0	16.0	16.0	16.0	16.0	16.0	16.0	16.0	16.0	16.0	16.0	16.0	16.0	16.0	16.0	16.0	16.0	16.0	16.0	16.0	16.0	16.0	16.0	16.0	16.0	16.0	16.0	16.0	16.0	16.0																																								
80	18.0	18.0	18.0	18.0	18.0	18.0	18.0	18.0	18.0	18.0	18.0	18.0	18.0	18.0	18.0	18.0	18.0	18.0	18.0	18.0	18.0	18.0	18.0	18.0	18.0	18.0	18.0	18.0	18.0	18.0	18.0	18.0	18.0	18.0	18.0	18.0	18.0	18.0	18.0	18.0	18.0	18.0	18.0	18.0	18.0	18.0	18.0	18.0																																								
90	20.0	20.0	20.0	20.0	20.0	20.0	20.0	20.0	20.0	20.0	20.0	20.0	20.0	20.0	20.0	20.0	20.0	20.0	20.0	20.0	20.0	20.0	20.0	20.0	20.0	20.0	20.0	20.0	20.0	20.0	20.0	20.0	20.0	20.0	20.0	20.0	20.0	20.0	20.0	20.0	20.0	20.0	20.0	20.0	20.0	20.0	20.0	20.0																																								
100	22.0	22.0	22.0	22.0	22.0	22.0	22.0	22.0	22.0	22.0	22.0	22.0	22.0	22.0	22.0	22.0	22.0	22.0	22.0	22.0	22.0	22.0	22.0	22.0	22.0	22.0	22.0	22.0	22.0	22.0	22.0	22.0	22.0	22.0	22.0	22.0	22.0	22.0	22.0	22.0	22.0	22.0	22.0	22.0																																												
110	24.0	24.0	24.0	24.0	24.0	24.0	24.0	24.0	24.0	24.0	24.0	24.0	24.0	24.0	24.0	24.0	24.0	24.0	24.0	24.0	24.0	24.0	24.0	24.0	24.0	24.0	24.0	24.0	24.0	24.0	24.0	24.0	24.0	24.0	24.0	24.0	24.0	24.0	24.0	24.0	24.0	24.0	24.0	24.0																																												
120	26.0	26.0	26.0	26.0	26.0	26.0	26.0	26.0	26.0	26.0	26.0	26.0	26.0	26.0	26.0	26.0	26.0	26.0	26.0	26.0	26.0	26.0	26.0	26.0	26.0	26.0	26.0	26.0	26.0	26.0	26.0	26.0	26.0	26.0	26.0	26.0	26.0	26.0	26.0	26.0	26.0	26.0	26.0	26.0																																												
130	28.0	28.0	28.0	28.0	28.0	28.0	28.0	28.0	28.0	28.0	28.0	28.0	28.0	28.0	28.0	28.0	28.0	28.0	28.0	28.0	28.0	28.0	28.0	28.0	28.0	28.0	28.0	28.0	28.0	28.0	28.0	28.0	28.0	28.0	28.0	28.0	28.0	28.0	28.0	28.0	28.0	28.0	28.0	28.0																																												
140	30.0	30.0	30.0	30.0	30.0	30.0	30.0	30.0	30.0	30.0	30.0	30.0	30.0	30.0	30.0	30.0	30.0	30.0	30.0	30.0	30.0	30.0	30.0	30.0	30.0	30.0	30.0	30.0	30.0	30.0	30.0	30.0	30.0	30.0	30.0	30.0	30.0	30.0	30.0	30.0	30.0	30.0	30.0	30.0																																												
150	32.0	32.0	32.0	32.0	32.0	32.0	32.0	32.0	32.0	32.0	32.0	32.0	32.0	32.0	32.0	32.0	32.0	32.0	32.0	32.0	32.0	32.0	32.0	32.0	32.0	32.0	32.0	32.0	32.0	32.0	32.0	32.0	32.0	32.0	32.0	32.0	32.0	32.0	32.0	32.0																																																
160	34.0	34.0	34.0	34.0	34.0	34.0	34.0	34.0	34.0	34.0	34.0	34.0	34.0	34.0	34.0	34.0	34.0	34.0	34.0	34.0	34.0	34.0	34.0	34.0	34.0	34.0	34.0	34.0	34.0	34.0	34.0	34.0	34.0	34.0	34.0	34.0	34.0	34.0	34.0	34.0																																																
170	36.0	36.0	36.0	36.0	36.0	36.0	36.0	36.0	36.0	36.0	36.0	36.0	36.0	36.0	36.0	36.0	36.0	36.0	36.0	36.0	36.0	36.0	36.0	36.0	36.0	36.0	36.0	36.0	36.0	36.0	36.0	36.0	36.0	36.0	36.0	36.0	36.0	36.0	36.0	36.0																																																
180	38.0	38.0	38.0	38.0	38.0	38.0	38.0	38.0	38.0	38.0	38.0	38.0	38.0	38.0	38.0	38.0	38.0	38.0	38.0	38.0	38.0	38.0	38.0	38.0	38.0	38.0	38.0	38.0	38.0	38.0	38.0	38.0	38.0	38.0	38.0	38.0	38.0	38.0	38.0	38.0																																																
190	40.0	40.0	40.0	40.0	40.0	40.0	40.0	40.0	40.0	40.0	40.0	40.0	40.0	40.0	40.0	40.0	40.0	40.0	40.0	40.0	40.0	40.0	40.0	40.0	40.0	40.0	40.0	40.0	40.0	40.0	40.0	40.0	40.0	40.0	40.0	40.0	40.0	40.0	40.0	40.0																																																
200	42.0	42.0	42.0	42.0	42.0	42.0	42.0	42.0	42.0	42.0	42.0	42.0	42.0	42.0	42.0	42.0	42.0	42.0	42.0	42.0	42.0	42.0	42.0	42.0	42.0	42.0	42.0	42.0	42.0	42.0	42.0	42.0	42.0	42.0	42.0	42.0	42.0	42.0	42.0	42.0																																																



EQUALLY SPACED MULLIONS SELECTION



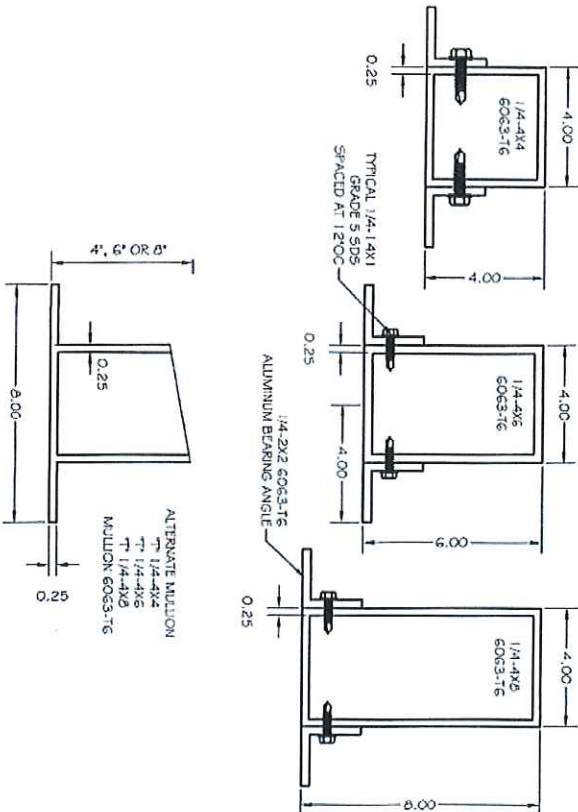
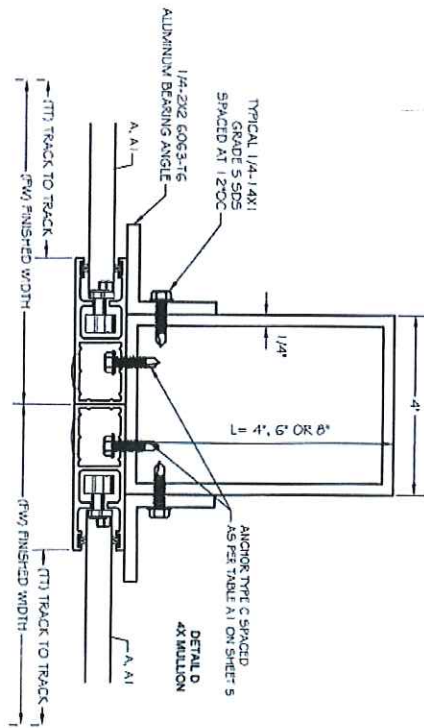
MULLION 1: TM1 = (FW1+FW2)/2
 MULLION 2: TM2 = (FW2+FW3)/2
 TM: TRIBUTARY MODULE

TABLE 4 - MULLION BARS MAXIMUM DESIGNED PRESSURES (PSF)

DOOR MODULE	1/4-4x8 mullion span			1/4-4x6 mullion span			1/4-4x4 mullion span		
	144	132	120	120	108	96	96	84	72
293	27	30	30	23	30	30	17	26	30
271	29	38	41	25	35	41	18	28	41
247	32	42	53	27	38	53	20	30	48
223	36	46	62	30	42	59	22	34	53
199	40	52	69	34	47	67	25	38	59
175	45	59	79	39	53	76	28	43	67
151	52	69	92	45	62	88	32	50	78
127	62	82	109	53	74	104	39	59	93
103	77	101	134	66	91	129	48	73	115
79	100	131	175	86	118	168	62	95	149
67	118	155	200	101	140	198	73	112	176

- NOTES:
 1- MULLIONS WERE DESIGNED BY RATIONAL ANALYSIS BASED ON THE ALUMINUM DESIGN MANUAL 2015 ED. AND THE FLORIDA BUILDING CODE.
 2- DEFLECTION CRITERIA: MAXIMUM SPAN / 180
 3- VALUES ABOVE IS APPLICABLE ONLY FOR EQUAL MODULES. FW1 = FW2 = FW3.
 4- UNEQUAL MODULES ARE TO BE DESIGNED BY RATIONAL ANALYSIS IN A CASE BY CASE BASIS.

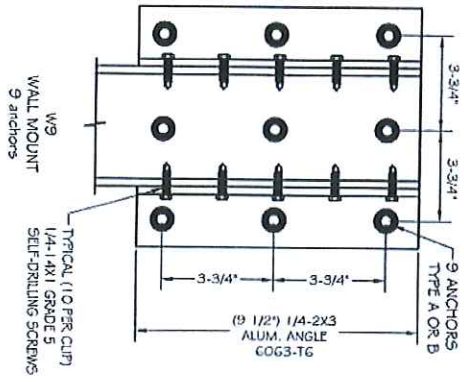
MULLIONS SECTIONS



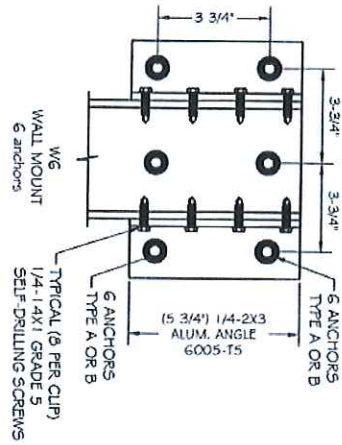
	MANUFACTURER: ADVANCED HURRICANE TECHNOLOGIES 6063 JAMES LANE NAPLES, FLORIDA 34109 TEL: (239) 260-0020	PRODUCT NAME: WIND ABATEMENT SYSTEM - LARGE MISSILE 50 MM ROLLING DOOR SYSTEM	PPMF INC. ENGINEERING SERVICES - CA 32459 9715 W. BROWARD BLVD. PLANTATION, FL 33324 PPMF@AOL.COM
	DATE: 02/25/18 DRAWING # 18-1103 SHEET 9 OF 12	SCALE: NA	ENGINEER SEAL PEDRO DE FIGUEROA PE 52609

EQUALLY SPACED MULLIONS WALL CONNECTIONS

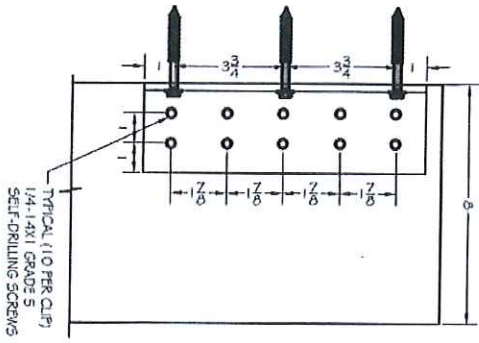
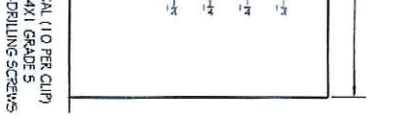
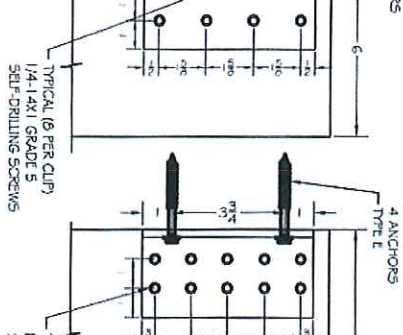
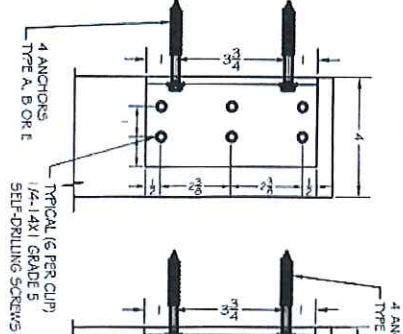
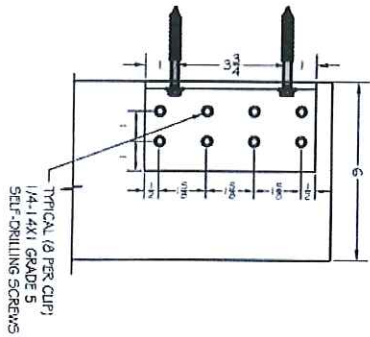
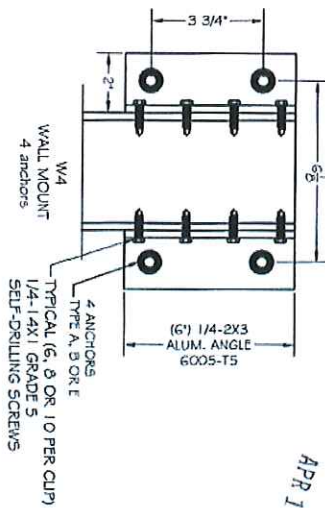
W9 - 1/4-4X8 MULLION
WALL MOUNT MOUNT
WITH ANCHOR TYPE A OR B



W6 - 1/4-4X6 MULLION
WALL MOUNT MOUNT
WITH ANCHOR TYPE A OR B



W4 - WALL MOUNT MOUNT
1/4-4X4 WITH ANCHOR TYPE A, B OR E
1/4-4X6 WITH ANCHOR TYPE E
1/4-4X8 WITH ANCHOR TYPE E



ANCHOR SCHEDULE:			
ANCHOR	DESCRIPTION	SUBSTRATE	EMBEDMENT
A	5/16X3" TAPCONS	MIN. 2899 PSI CONCRETE	2 1/4"
B	5/16X3" TAPCONS	GROUT FILLED C-90 BLOCK	2 1/2"
E	3/8X2 1/2" WEDGE BOLTS	MIN. 3000 PSI CONCRETE	4 1/2"

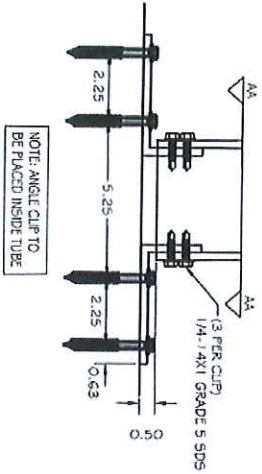
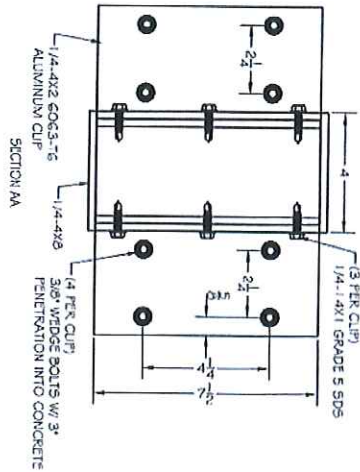
WALL MOUNT ANCHOR SELECTION			
ANCHOR TYPE	MULLION TYPE	4X4	4X6
A	A	W4	W6
B	B	W4	W6
E	E	W4	W4



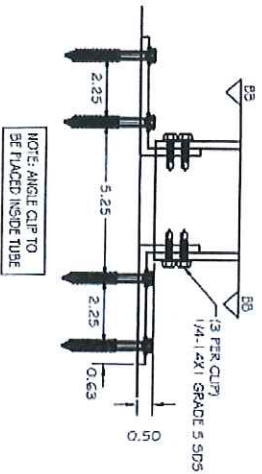
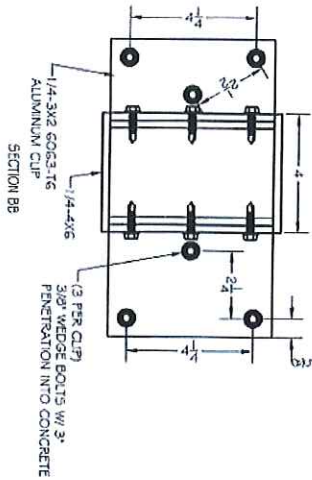
<p>AHT ADVANCED HURRICANE TECHNOLOGIES 6063 JAMES LANE NAPLES, FLORIDA 34109 TEL: (239) 260-0020</p>	<p>MANUFACTURER:</p>	<p>PRODUCT NAME:</p> <p>WIND ABATEMENT SYSTEM - LARGE MISSILE 58 MM ROLLING DOOR SYSTEM</p>	<p>PPMF Inc. ENGINEERING SERVICES - CA 32459 9715 W. BROWARD BLVD. PLANTATION, FL 33324 PPMF@AOL.COM</p>
	<p>SCALE: N/A</p> <p>DATE: 02/25/18</p> <p>DRAWING # 1B-103</p> <p>SHEET 10 OF 12</p>	<p>ENGINEER SEAL PEDRO DE FIGUEROA PE 52609</p>	

EQUALLY SPACED MULLIONS FLOOR AND CEILING CONNECTIONS

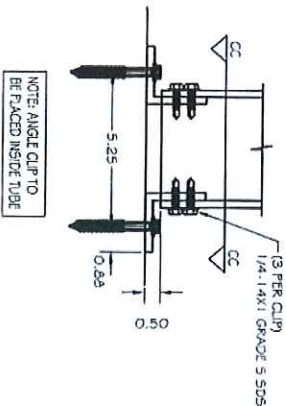
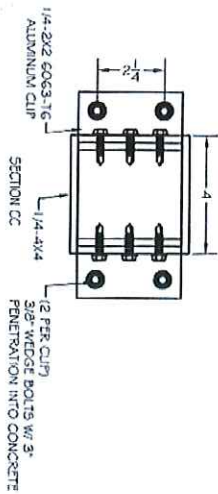
1/4-4X8 MULLION
FLOOR/CEILING MOUNT



1/4-4X6 MULLION
FLOOR/CEILING MOUNT




1/4-4X4 MULLION
FLOOR/CEILING MOUNT

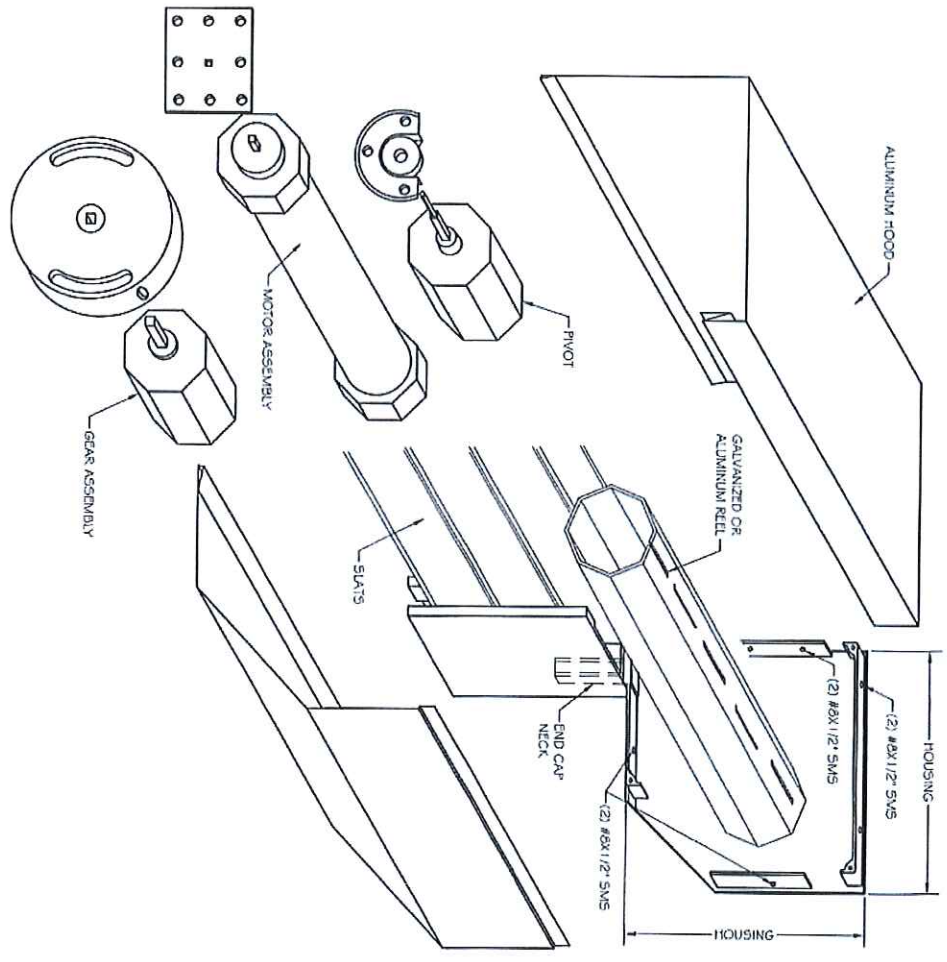


FLOOR / CEILING CONNECTION CAPACITY FUNCTION OF DESIGNED PRESSURES ON TABLE 4

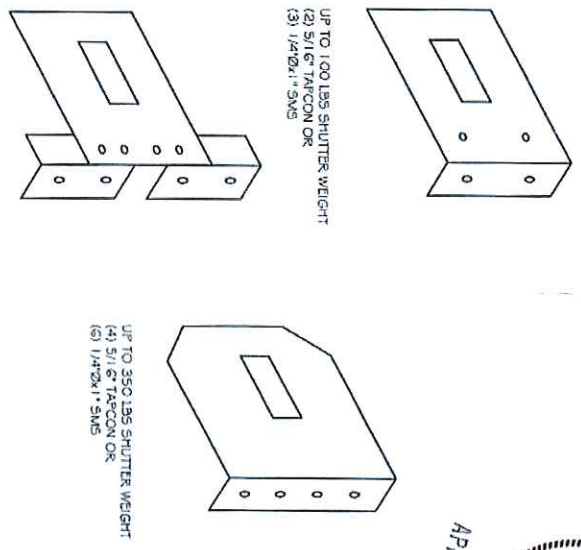


 <p>MANUFACTURER: ADVANCED HURRICANE TECHNOLOGIES 6063 JANES LANE NAPLES, FLORIDA 34109 TEL: (239) 260-0020</p>	<p>PRODUCT NAME: WIND ABATEMENT SYSTEM - LARGE MISSILE 58 MM ROLLING DOOR SYSTEM</p>	<p>PPMF Inc. ENGINEERING SERVICES - CA 32459 9715 W. BROWARD BLVD. PLANTATION, FL 33324 PPMF@AOL.COM</p> <p>ENGINEER SEAL PEDRO DE FIGUEROA PE 52609</p>
	<p>SCALE: NA DATE: 02/25/18 DRAWING # 1B-103 SHEET 11 OF 12</p>	

HOOD ASSEMBLY



OPTIONAL STEEL BRACKET

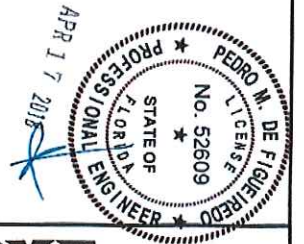
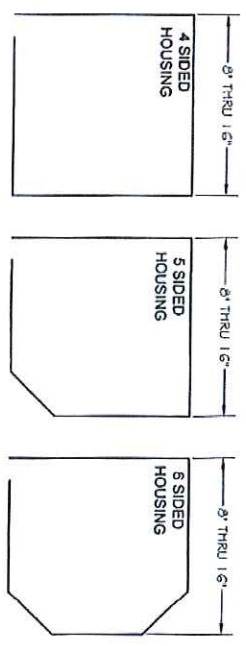


UP TO 100 LBS SHUTTER WEIGHT
 (2) 5/16\"/>

UP TO 350 LBS SHUTTER WEIGHT
 (4) 5/16\"/>

UP TO 200 LBS SHUTTER WEIGHT
 (3) 5/16\"/>

NOTE: THE ROLL-UP MECHANISM (GEARS, MOTORS, SUPPORTING END PLATES) ARE NOT PART OF THIS APPROVAL. MANUFACTURER IS RESPONSIBLE TO SPECIFY THESE COMPONENTS FOR PROPER SHUTTER OPERATION.



	MANUFACTURER: ADVANCED HURRICANE TECHNOLOGIES 603 JAMES LAKE NAPLES, FLORIDA 34109 TEL: (239) 260-0020	PRODUCT NAME: WIND ABATEMENT SYSTEM - LARGE MISSILE 58 MM ROLLING DOOR SYSTEM	PPMF Inc. ENGINEERING SERVICES - CA 32459 9715 W. BROWARD BLVD. PLANTATION, FL 33324 PPMF@AOL.COM
	DATE: 02/25/18 SCALE: N/A DRAWING # 18-103 SHEET 12 OF 12	ENGINEER SEAL PEDRO DE FIGUEROA PE 52609	